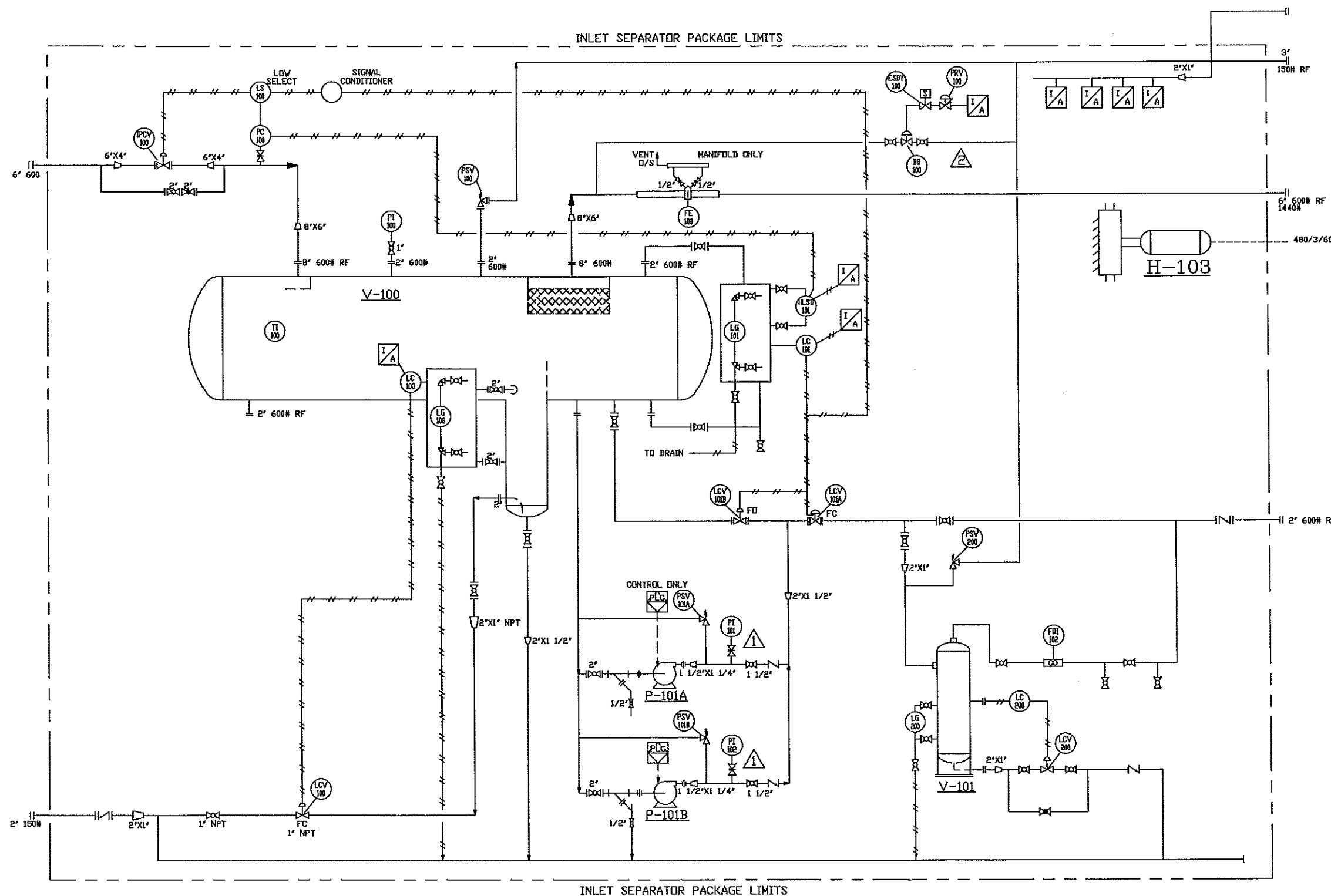


P-101A/B  
CONDENSATE PUMPS  
KERR KJ-2250 DUPLEX  
CAPACITY: 27.8 LITRES/MIN  
POWER: 5.2 KW.  
480/3/60

V-100  
INLET SEPARATOR  
48"O.D. X 16'-0" SM/SM  
1440 PSIG, D.P.  
HORIZONTAL, 3 PHASE  
100°F DESIGN

V-101  
CONDENSATE CONDITIONER  
SIZE: 324 MM O.D. X 1686 MM S.S.  
D.P.: 10,000 RPa @ 30°C

H-103  
BUILDING HEATER  
RUFNECK  
MODEL FX416-480360-15  
C/W DEFENDER THERMOSTAT.



# INSTRUMENTATION LIST

PSV-100	2" 600 ANSI RF X 3" 150 ANSI RF MERCER MODEL 9100 SET @ 1440 PSI, "H" ORIFICE
PSV-101A/101B	1" NPT MERCER MODEL 9100, SET @ 1440 PSI.
PSV-200	1" NPT MERCER MODEL 9100 SET @ 1440 PSI
FE-100	REMANUFACTURED 6" 600 ANSI RF DANIEL SENIOR, AGA-3C STRAIGHTENING VANES, SCH.80
MANIFOLD	5 VALVE MANIFOLD
LC-100/101	2" 600 ANSI RF FISHER 2500-244V EXTERNAL CASE LEVEL CONTROLLER, DIRECT, SNAP ACTING.
PCV/PC-100	4" 600 ANSI RF REMANUFACTURED FISHER 607-ET, SIZE 45 ACTUATOR, FAIL CLOSE, ARICO 8300KR (0-1500) PRESSURE CONTROLLER.
HLS-101	2" NPT SOR PS-1530, C/W EXTERNAL CAGE.
LG-100	PENBERTHY MODEL ITM5 C/W 330J VALVES.
LG-101	PENBERTHY MODEL IRM5 C/W 330J VALVES.
LCV-100	1" NPT FISHER 128PQC, FAIL CLOSED, 3/8" TRIM.
LCV-101A	2" 600 ANSI RF FISHER 357, FAIL CLOSE, 1" TRIM
LCV-101B	2" 600 ANSI RF FISHER 357, FAIL OPEN, 1" TRIM
PI-100/101 102	1/2" NPT X 4 1/2" DIAL FACE, DUAL SCALE, LIQUID FILLED, 0-2000 PSI RANGE.
TI-100	1/2" NPT X 3/4" NPT X 6" 316 S.S. THERMOWELL C/W TEI-TRU THERMOMETER. -20°F/180°F
LS-100	MOORE LOW SELECT, 1/4" NPT
FQI-102	1" NPT HALLIBURTON TURBINE C/W RTU HALLIBURTON TURBINE
LC-200	2" NPT FISHER 2880-288T LEVEL CONTROLLER, DIRECT SNAP ACTING.
LCV-200	1" NPT FISHER 128 PQC, FAIL CLOSED, 1/4" TRIM
LG-200	PENBERTHY IRM5 C/W 330J VALVES.
BD-100	1" FISHER 357 F.O.
PRV-100	FISHER 67C/R
ESDY-100	ASCO EFB320G202-24-3 WAY SOLENOID

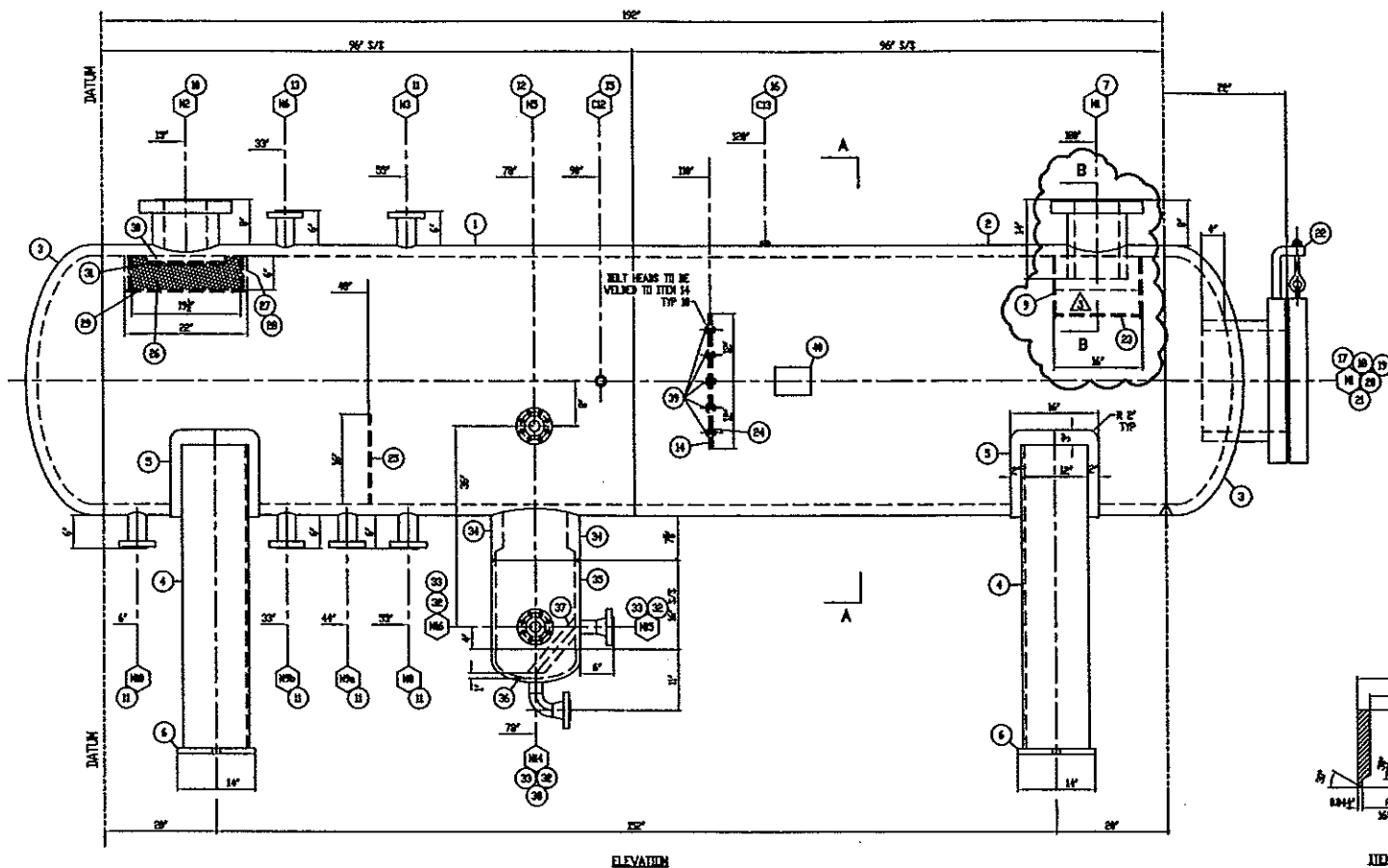
LEGEND	PROCESS LINE	VALVE	FLG'D	THRD.
	METHANOL LINE	BALL	[Symbol]	[Symbol]
	INSTR. GAS LINE	GATE	[Symbol]	[Symbol]
	SENSING LINE	GLOBE	[Symbol]	[Symbol]
		CHECK	[Symbol]	[Symbol]
		NEEDLE		[Symbol]

REV.#	REVISION	BY	APPR	DATE
3	AS BUILT	SL		01/04/06
2	ADDED BD-100, PRV-100 & ESDY-100	SL		01/04/02
1	ADDED PI-101 & PI-102	SL		01/03/21
A	ISSUED FOR APPROVAL	SL		01/02/21

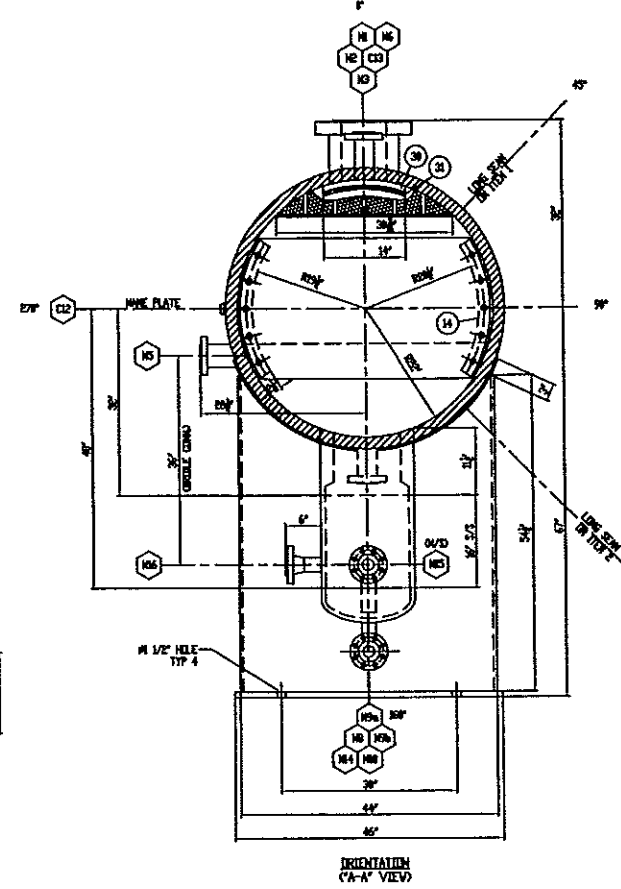
**PETRO FIELD INDUSTRIES INC.**

4015-43 STREET, SE.  
CALGARY, ALBERTA T2B 3N4  
PHONE: (403) 244-3333  
FAX: (403) 245-1821  
SHOP: PHONE: (403) 207-0111  
FAX: (403) 207-3337

CUSTOMER NAME		CONCISE		01-024	
48"O.D. X 16' SM/SM HORIZONTAL SEPARATOR 3 PHASE 1440 SPI					
DWN BY	CHK'D	APPR.	SCALE	DWG. NO.	
S. LO			NONE	01-024-F-01	
DATE	GATE	DATE	SHT.#		
01/02/21			1 of 1		



ELEVATION



ORIENTATION  
(A-A' VIEW)

FOLLOWING ITEMS TO BE IMPACT  
TESTED AS PER UG-84:

ITEM NO.	AVERAGE IMPACT ENERGY REQUIRED FOR 3 SPECIMENS	HIGH IMPACT ENERGY REQUIRED FOR 1 SPECIMEN	IMPACT TEMP.
1	15 Ft.Lb.	12 Ft.Lb.	-20° F
2	15 Ft.Lb.	12 Ft.Lb.	-20° F
3	15 Ft.Lb.	12 Ft.Lb.	-20° F

BILL OF MATERIALS				
MK	QTY	DESCRIPTION	MAT'L	HT NUM
1	ONE	2" PL R/W TO 48" ID x 96" LG	SAS1670N	*
2	ONE	2" PL R/W TO 48" ID x 96" LG	SAS1670N	*
3	2	2" PL FORM TO 48" ID, B1 SE, 2" SF MIN-1875"	SAS1670N	*
4	2	1/2" PL x 12" x 44" x 12" x 57" LG (CTS)	SA36	
5	2	3/8" PL x 16" x 60" LG BEND TO 48" ID	SAS1670N	
6	2	1" PL x 14" x 46" LG	SA36	
7	ONE	8" 6000 RFLVN x 14" LG	NI	SA350LF2
8				
9	2	3/8" PL x 10 15/16" x 16" WIDE (CTS) INLET BAFFLE	NI	SAS1670N
10	ONE	8" 6000 RFLVN - HB x 12" LG (CTS)	N2	SA350LF2
11	5	2" 6000 RFLVN x 9" LG (CTS)	N3/N9/N9a/b/M10	SA350LF2
12	ONE	2" 6000 RFLVN "HB" x 9" LG (CTS)	N5	SA350LF2
13	ONE	2" 6000 RFLVN x 9" LG (CTS)	N6	SA350LF2
14	2	3/8" FB x 2 1/2" WIDE x 39" ID x 44" ID x 24" LG	SAS1670N	
15	ONE	3/4" 6000 TIL	C12	SA105N
16	ONE	1/2" 6000 TIL	C13	SA105N
17	ONE	18" 6000 RFLVN x 16" LG (CTS)	NI	SA350LF2
18	ONE	18" 6000 RF BLIND FLANGE	NI	SA350LF2
19	ONE	18" 6000 FLEX GASKET	NI	304LSS
20	20	# 1 5/8" STUD x 10 3/4" LG	NI	SA193/B7
21	40	# 1 5/8" HEX NUT	NI	SA194/2H
22	ONE	18" 6000 DAVIT ARM	NI	SA106B
23	2	3/8" PL x 8 9/16" x 15 1/4" LG	SAS1670N	
24	ONE	3/8" PL x AS SHOWN IN DETAIL	FLUAT PROTECTOR	SAS1670N
25	ONE	3/8" PL x AS SHOWN IN DETAIL	BAFFLE	SAS1670N
26	ONE	6" THK x 19 1/2" x 30 3/16" (CTS) 98/F <sup>2</sup> MESH	304LSS	
27	2	58/F <sup>2</sup> EXPANDED METAL x 6" x 30 3/16" (CTS)	SA36	
28	10	# 5/8" ROUND BAR x 6" LG (CTS)	SA36	
29	ONE	3/8" PL x 22" x 30 3/16"	MESH BASE	SAS1670N
30	ONE	1/4" FB x 14" x 14" x 1" WIDE BENT TO VESSEL ID	SAS1670N	
31	ONE	58/F <sup>2</sup> EXPANDED METAL x 14" x 14"	SA36	
32	3	2" 6000 SCH XOH RFLVN	NI4/N15/N16	SA105N
33	3	2" SCH XOH PIPE x 5" LG (CTS)	NI4/N15/N16	SA106B
34	ONE	16" ID x 11 1/2" ID x 14" LG (CTS) FORGING	BOOT	SA350LF2
35	ONE	16" SCH 80 PIPE x 16" LG	BOOT	SA106B
36	ONE	3/4" PL FORM TO 16" ID, B1 SE, 2" SF MIN-0.6875"	SAS1670N	
37	ONE	2" SCH XOH PIPE x 14" LG (CTS)	N15 SYPHON	SA106B
38	ONE	2" SCH XOH 90° LR ELBOW	N14	SA234WPB
39	10	# 1/2" STAINLESS BOLT x 2" LG C/W HEX NUT	316SS	
40	ONE	NAME PLATE BRACKET C/W NAME PLATE	SAS1670N	

DESIGN NOTES

MAWP	1440 PSI	OPER. PRESS.		APPROX. VOL.	187 ft <sup>3</sup>
DESIGN TEMP.	100° F	OPER. TEMP.		APPROX. WT.	21000#
CORR. ALLIV.	1/16"	SERVICE	SWEET	QUALITY CONT.	AQP-1148
X-RAY	RT-1 UN11a	MAX. N/C		WELD PROCD REG. #	VP10122
STRESS RELIEVE	1150°F/2 Hr.	HYDROTEST	1872 PSI	LSD	PORTABLE
MINUT	NI	PICKLE	NI	CRN BLAST	INTERNAL
UT C/T, D WELDS	EXEMPT AS PER	MP1	NI	SHOP PRIME	PRIME
IMPACT	UG-20KEX-5 & UCS-66	BHN 200 MAX	NI	PAINT SPEC	
CRN				CRN DWG	01-004 Rev. 1
SHELL	2000"	1742"	2000"	S/N	01-004
HEAD	1875"	1685"	2000"		

NOZZLE SCHEDULE

MK	QTY	SERVICE	SIZE	RAT'G	TYPE	FLO BORE	PIPE SCH	WELD DET	WELD A	WELD B	WELD C	INT	EXT	REPAD
N1	ONE	INLET	8"	6000	RFLVN	8"	-	5	1/2"	1/2"	-	AS	6"	-
N2	ONE	GAS OUTLET	8"	6000	HB	7.62"	-	6	1/2"	1/2"	-	6"	-	-
N3	ONE	PSV	2"	6000	RFLVN	2"	-	6	3/8"	3/8"	-	6"	-	-
N5	ONE	INTERFACE MIDDLE CONN.	2"	6000	HB	1.94"	-	6	3/8"	3/8"	-	AS	-	-
N6	ONE	TIL BRIDLE CONN.	2"	6000	RFLVN	2"	-	6	3/8"	3/8"	-	6"	-	-
N8	ONE	WATER DRAIN	2"	6000	RFLVN	2"	-	6	3/8"	3/8"	-	6"	-	-
N9a	ONE	TIL DUT	2"	6000	RFLVN	2"	-	6	3/8"	3/8"	-	6"	-	-
N9b	ONE	TIL BRIDLE CONN.	2"	6000	RFLVN	2"	-	6	3/8"	3/8"	-	6"	-	-
N10	ONE	DRAIN	2"	6000	RFLVN	2"	-	6	3/8"	3/8"	-	6"	-	-
C12	ONE	TI	3/4"	6000	TIL	-	-	10	3/8"	3/8"	-	-	-	-
C13	ONE	PI	1/2"	6000	TIL	-	-	10	3/8"	3/8"	-	-	-	-
N14	ONE	BOOT DRAIN	2"	6000	RFLVN	XOH	XOH	4.6	3/8"	3/8"	-	AS	-	-
N15	ONE	SYPHON DRAIN	2"	6000	RFLVN	XOH	XOH	4.6	3/8"	3/8"	-	6"	-	-
N16	ONE	INTERFACE MIDDLE CONN.	2"	6000	RFLVN	XOH	XOH	4.6	3/8"	3/8"	-	6"	-	-
-	ONE	BOOT	16"	-	-	-	-	2.6	1	1	-	24"	-	-
M1	ONE	HARWAY	18"	6000	RFLVN	18"	-	5	1	1	-	4"	AS	-

LONG SEAM	SHELL TO HEAD	SKIRT TO HEAD	FTG's TO NOZZLE	NOZZLE W/ INT PROJ	NOZZLE FLUSH	REPAD & INT PROJ	REPAD & FLUSH	COUPLING	THREDOLET	SLIP ON FLANGE	TYPICAL NON PRESSURE ATTACHMENT WELD
VD 1 	VD 2 	VD 3 	VD 4 	VD 5 	VD 6 	VD 7 	VD 8 	VD 9 	VD 10 	VD 11 	VD 12 
VPS FM 10 Rev.1, 13N	VPS FM 10 Rev.1, 13N	VPS FM	VPS FM 10 Rev.1, 13N	VPS FM 9 Rev.2	VPS FM 9 Rev.2	VPS FM	VPS FM	VPS FM 9 Rev.2	VPS FM 9 Rev.2	VPS FM	VPS FM 9 Rev.2

CUSTOMER SPECIFICATIONS

GENERAL NOTES

NO DATE

REVISIONS

BY APP

ENGINEERING RECORD

DATE

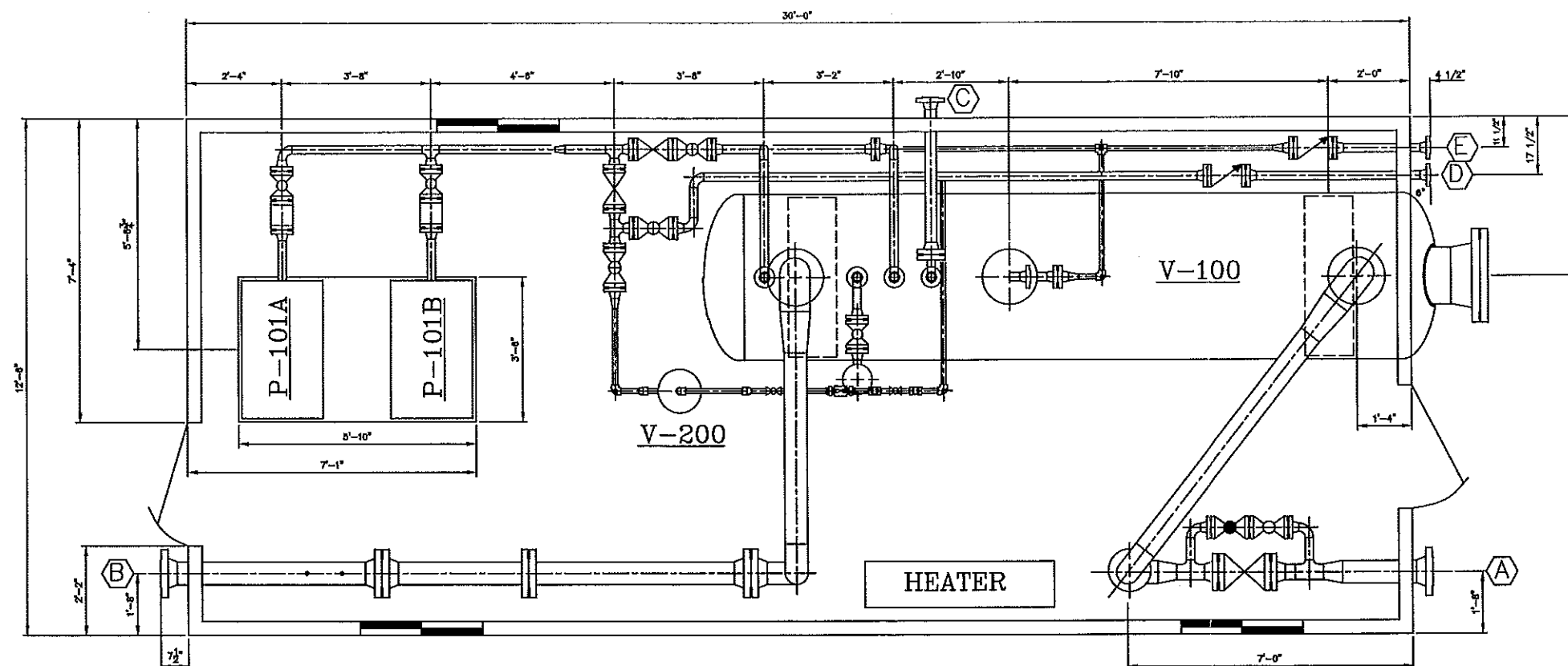
1. VESSEL TO BE DESIGNED AND CONSTRUCTED IN ACCORDANCE WITH ASME BOILER AND PRESSURE VESSEL CODE, SECTION VIII, DIVISION 1 98 EDITION 2000 ADD. UN11a	3	Rev/7/01	REVISED INLET BAFFLE DETAIL	CJB	DRAWN	S.SUBASIC	Jan/26/01
2. BUILDER REGISTRATION IN THE PROVINCE OF AB.	B	Rev/2/01	AS PER CUSTOMER FAX FROM Feb/12/01.	SS	SS	CHECKED	
3. ALL BOLT HOLES TO STRADDLE NATURAL CENTRE LINES UNLESS OTHERWISE NOTED	C	Rev/2/01	AS PER CUSTOMER FAX FROM Feb/16/01.	SS	SS	APP	
4. VESSEL TO BE THOROUGHLY DRAINED AND CLEANED AND ALL OPENINGS PLUGGED BEFORE SHIPMENT.	D	Rev/2/01	AS PER CUSTOMER FAX FROM Feb/21/01.	SS	SS		
5. ALL TACKS TO BE DONE VPS FM 9 Rev.2.	E	Rev/2/01	ITEM 38 ADDED, SADDLE LENGTH CHANGED FROM 52 1/2" TO 54 1/2".	SS	SS		
6. ALL ATTACHMENTS TO VESSEL TO BE 1/4" CONTINUOUS FILLET WELD VPS FM 9 Rev.2	F	Rev/2/01	ELEVATION VIEW MIRROR IMAGED, ITEMS 9 & 23 CHANGED.	SS	SS		
	1	Rev/2/01	ITEM 23 CHANGED, DWG ISSUED FOR CONSTRUCTION.	SS	SS		
	2	Rev/2/01	BAFFLE (ITEM 24) CHANGED TO BE REMOVABLE, ITEM 9 CHANGED.	SS	SS		

International  
Vessel  
Fabrication Inc.



7580 - 48th Street S.E.  
CALGARY, ALBERTA CANADA  
T2C 4L6

CLIENT	Petro Field Industries Inc.		
PROJECT:	48" OD x 192" S/S HORIZONTAL SEPARATOR 1440 PSI @ 100°F		
SCALE	JOB NO	DWG NO	REV
NTS	01-004	01-004	3

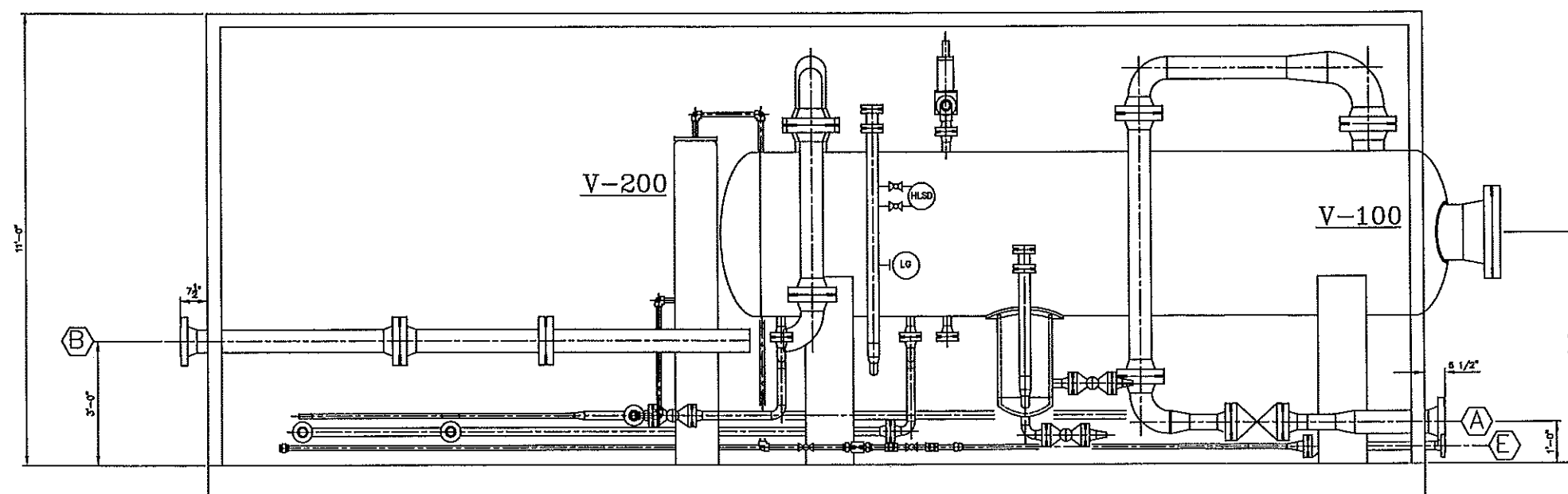


HORIZONTAL SEPARATOR - PLANVIEW

- BUILDING:
- 22 GA. GALVANIZED
  - 24 GA. FLUTED ALUMINUM
  - R-12
  - VAPOUR BARRIER
  - GABLE ROOF
  - FOUR(4) LOW VENT
  - ONE(1) RIDGE VENT

TIE-IN CHART		
MARK	SIZE	DESCRIPTION
A	6"	600# RF PRODUCTION INLET
B	6"	600# RF OUTLET
C	3"	150# RF PSV OUTLET
D	2"	600# RF CONDENSATE OUTLET
E	2"	150# RF DRAIN, WATER OUTLET

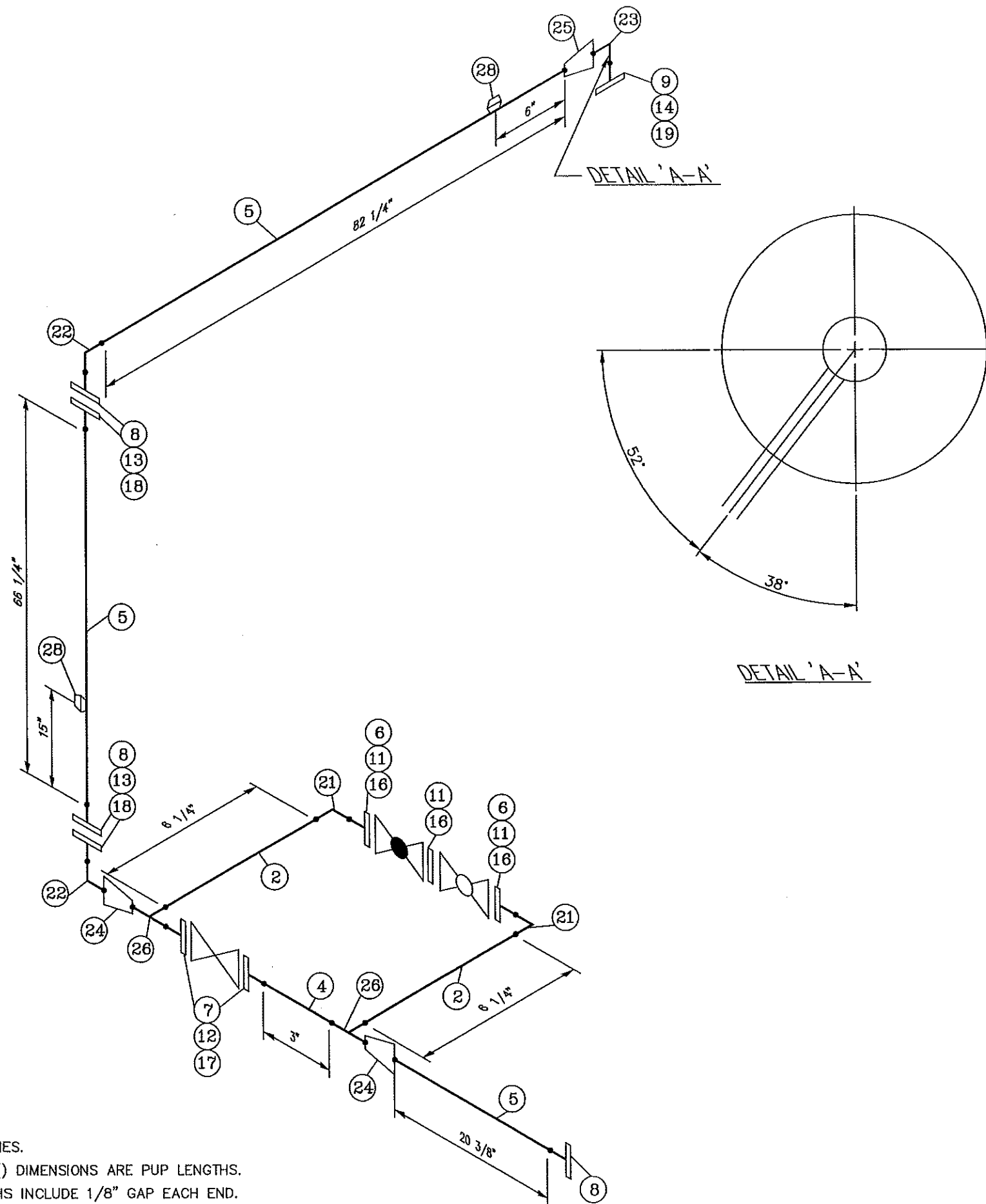
ELEVATION:  
CONDENSATE OUTLET: 17 1/2" T.O.S.  
DRAIN, WATER OUTLET: 6 1/2" T.O.S.



HORIZONTAL SEPARATOR - ELEVATION



REV.#	REVISION	BY	APPR	DATE
1	AS BUILT	SL		01/04/06
A	FOR APPROVAL	SL		01/02/21
CUSTOMER NAME			JOB#	
ENCAL - EDSON C/O CONCISE ENG.			01-024	
48"O.D. X 16' SM/SM HORIZONTAL SEPARATOR 3 PHASE 1440 PSI LAYOUT DRAWING				
DWN BY S. LO	CHK'D.	APPR.	SCALE N.T.S.	DWG. NO.
DATE 01/02/25	DATE	DATE	SHT.# 1 of 1	01-024-E-01



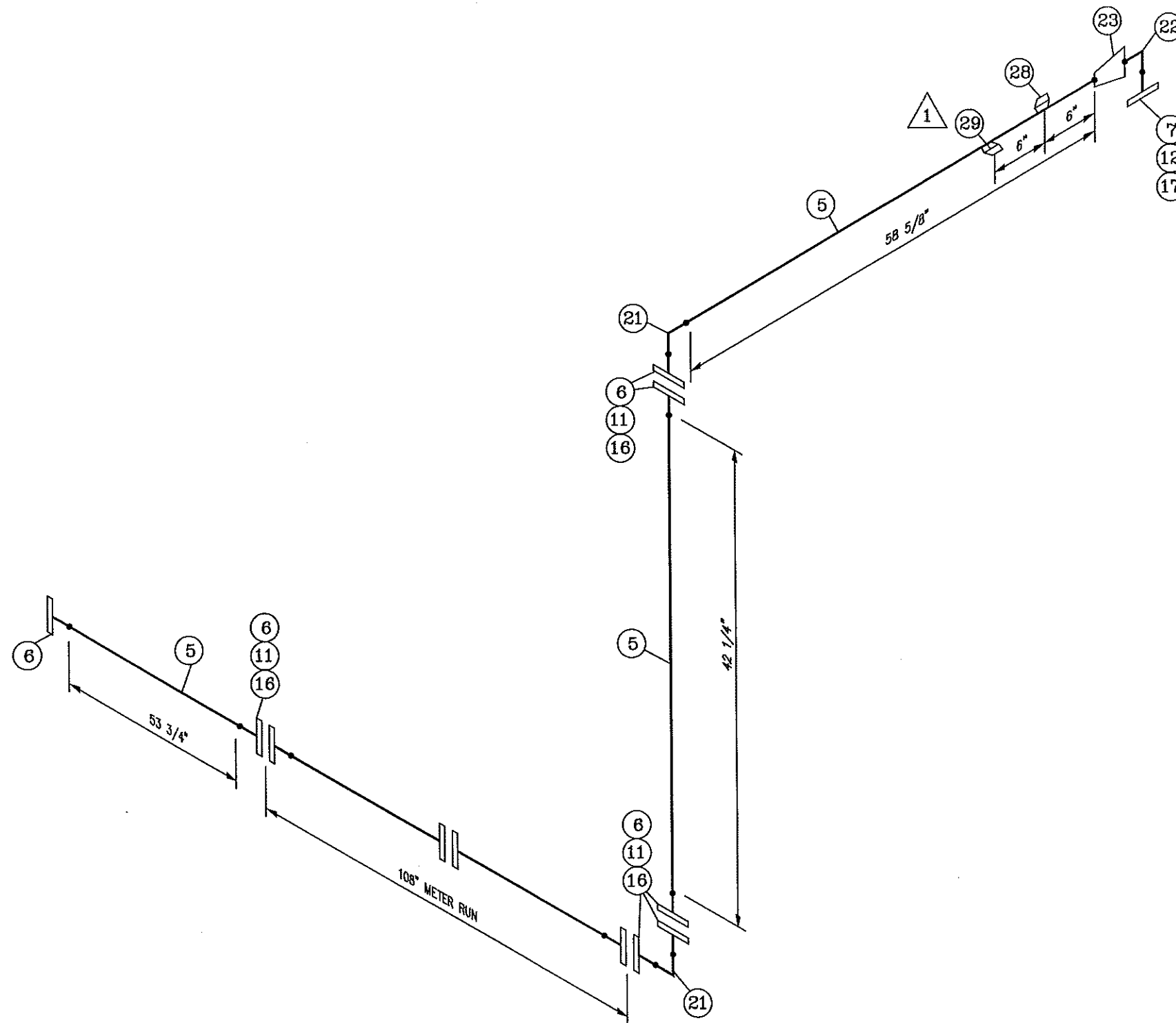
# NOTES:

- 1.) ALL DIM. IN INCHES.
- 2.) ALL BRACKETED() DIMENSIONS ARE PUP LENGTHS.
- 3.) ALL PUP LENGTHS INCLUDE 1/8" GAP EACH END.
- 4.) CLEAN PER SSPC-SP7, PRIMED AND PAINTED GREY.



## BILL OF MATERIALS

MK.	QTY.	SIZE	SCH.	RTG.	DESCRIPTION	MATERIAL		
PIPE								
1								
2	1'-6"	2"	80		SMLS	SA-106 B		
3								
4	1'-0"	4"	80		SMLS	SA-106 B		
5	14'-6"	6"	80		SMLS	SA-106 B		
FLANGES								
6	2	2"	80	600#	RFWN	SA-105N		
7	2	4"	80	600#	RFWN	SA-105N		
8	5	6"	80	600#	RFWN	SA-105N		
9	1	8"	80	600#	RFWN	SA-105N		
10								
STUDS/NUTS								
11	24	5/8"	4 1/4" LONG w/ 2 NUTS EACH			A-193-B7 A-194-2H		
12	16	7/8"	5 3/4" LONG w/ 2 NUTS EACH			A-193-B7 A-194-2H		
13	48	1"	6 3/4" LONG w/ 2 NUTS EACH			A-193-B7 A-194-2H		
14	12	1 1/8"	7 3/4" LONG w/ 2 NUTS EACH			A-193-B7 A-194-2H		
15								
GASKETS								
16	3	2"	-		FLEXITALLIC	C.S.		
17	2	4"	-		FLEXITALLIC	C.S.		
18	4	6"	-		FLEXITALLIC	C.S.		
19	1	8"	-		FLEXITALLIC	C.S.		
20								
FITTINGS/BW								
21	2	2"	80		90° LR ELBOW	SA-234-WPB		
22	2	6"	80		90° LR ELBOW	SA-234-WPB		
23	1	8"	80		90° LR ELBOW	SA-234-WPB		
24	2	6"X4"	80		CONC. REDUCER	SA-234-WPB		
25	1	8"X6"	80		CONC. REDUCER	SA-234-WPB		
26	2	4"X2"	80		REDUCING TEE	SA-234-WPB		
27								
FITTINGS/SCR-SW								
28	2	1/2"		3000#	T.O.L.	SA-105N		
29								
30								
MISC.								
31								
32								
33								
34								
35								
REV.#	REVISION				BY	APPR	DATE	
A	FOR APPROVAL				SL		01/03/05	
CUSTOMER NAME								
ENCAL - EDSON C/O CONCISE ENG.								
D. PRES. 1440 PSI		D. TEMP. -20/100°F		48" X 16' SM/SM HOR. SEP. 3 PHASE 1440 PSI PIPE SPOOL				
CORR. ALLOW. 1/16"		HYDRO. PRESS. 2160 PSI						
RADIOGRAPHY 10%		P.W.H.T. NO						
W.P.S. PFI-1/2		PAINT SEE NOTE 4		DWN BY S. LO	DATE 01/03/05	APPR.	DATE	JOB# 01-024
INT. COATING NONE		INSULATION NONE		CODE B31.3	DWG. NO. 01-024-I-01		SHT# 1 of 4	REV. A



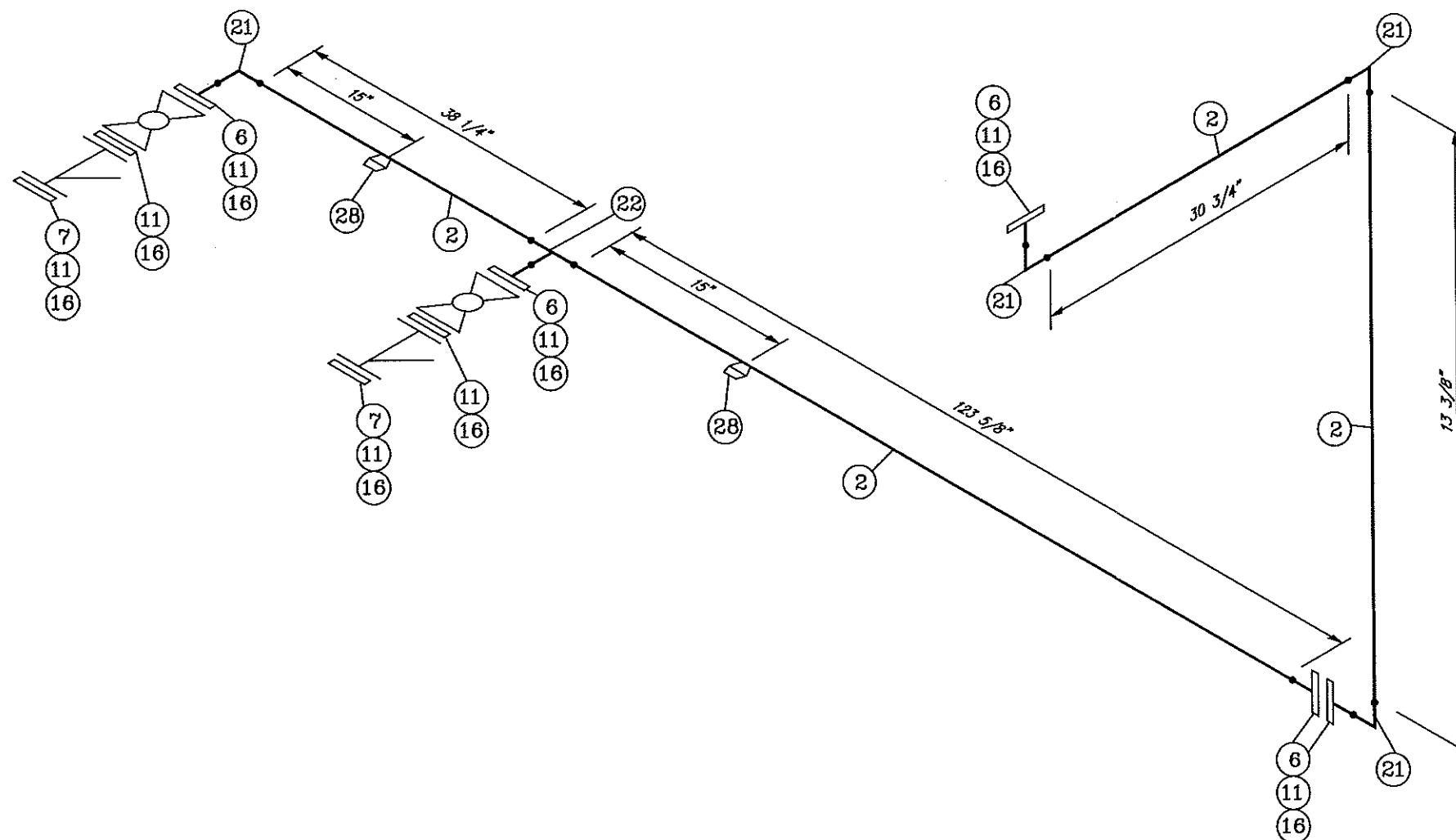
# NOTES:

- 1.) ALL DIM. IN INCHES.
- 2.) ALL BRACKETED() DIMENSIONS ARE PUP LENGTHS.
- 3.) ALL PUP LENGTHS INCLUDE 1/8" GAP EACH END.
- 4.) CLEAN PER SSPC-SP7, PRIMED AND PAINTED GREY.



## BILL OF MATERIALS

MK.	QTY.	SIZE	SCH.	RTG.	DESCRIPTION	MATERIAL								
PIPE														
1														
2														
3														
4														
5	13'-0"	6"	80		SMLS	SA-106 B								
FLANGES														
6	7	6"	80	600#	RFWN	SA-105N								
7	1	8"	80	600#	RFWN	SA-105N								
8														
9														
10														
STUDS/NUTS														
11	72	1"			6 3/4" LONG w/ 2 NUTS EACH	A-193-B7 A-194-2H								
12	12	1 1/8"			7 3/4" LONG w/ 2 NUTS EACH	A-193-B7 A-194-2H								
13														
14														
15														
GASKETS														
16	6	6"	-		FLEXITALLIC	C.S.								
17	1	8"	-		FLEXITALLIC	C.S.								
18														
19														
20														
FITTINGS/BW														
21	2	6"	80		90° LR ELBOW	SA-234-WPE								
22	1	8"	80		90° LR ELBOW	SA-234-WPE								
23	1	8"X6"	80		CONC. REDUCER	SA-234-WPE								
24														
25														
26														
27														
FITTINGS/SCR-SW														
28	1	1/2"		3000#	T.O.L.	SA-105N								
29	1	1"		3000#	T.O.L.	SA-105N								
30														
MISC.														
31														
32														
33														
34														
35														
REV.#	REVISION				BY	APPR	DATE							
1	ADDED 1" T.O.L.				SL		01/04/02							
A	FOR APPROVAL				SL		01/03/05							
CUSTOMER NAME														
ENCAL - EDSON C/O CONCISE ENG.														
D. PRES.	1440 PSI	D. TEMP.	-20/100°F	48" X 16' SM/SM HOR. SEP. 3 PHASE 1440 PSI PIPE SPOOL										
CORR. ALLOW.	1/16"	HYDRO. PRESS.	2160 PSI											
RADIOGRAPHY	10%	P.W.H.T.	NO											
W.P.S.	PFI-1/2	PAINT	SEE NOTE 4	DWN BY	S. LO	DATE	01/03/05	APPR.		DATE		JOB#	01-024	
INT. COATING	NONE	INSULATION	NONE	CODE	B31.3	DWG. NO.	01-024-I-01			SHT#	2 of 4		RE	



# NOTES:

- 1.) ALL DIM. IN INCHES.
- 2.) ALL BRACKETED() DIMENSIONS ARE PUP LENGTHS.
- 3.) ALL PUP LENGTHS INCLUDE 1/8" GAP EACH END.
- 4.) CLEAN PER SSPC-SP7, PRIMED AND PAINTED GREY.



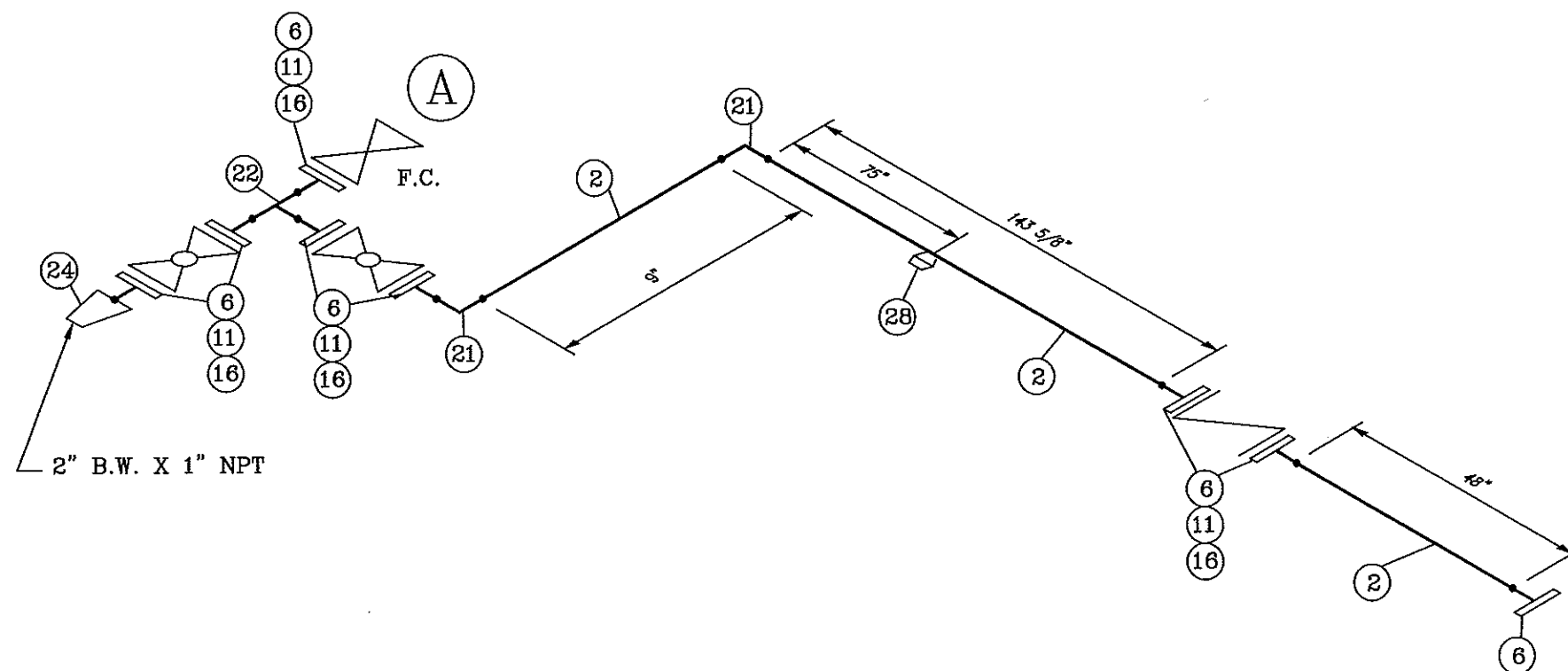
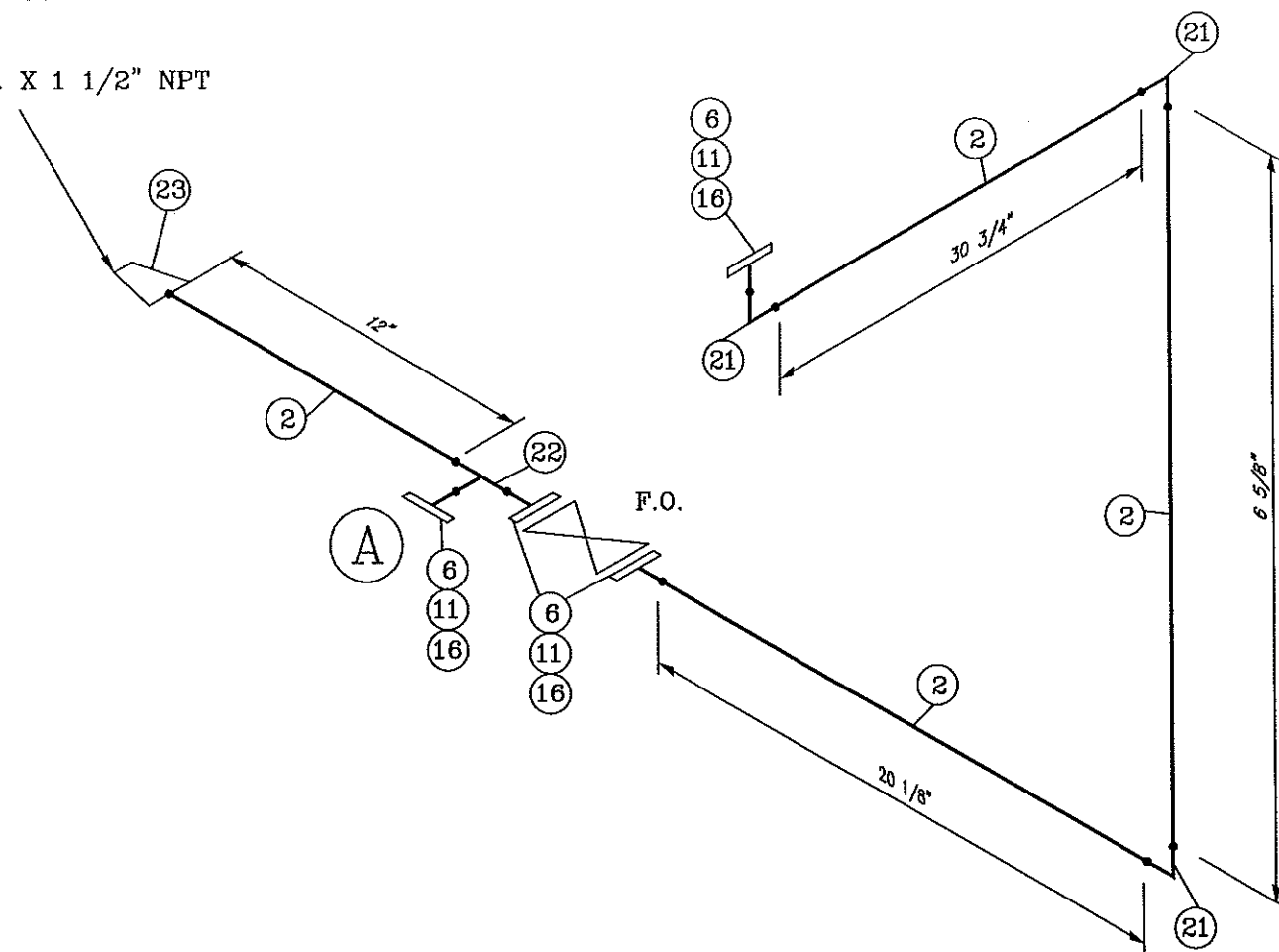
## BILL OF MATERIALS

MK.	QTY.	SIZE	SCH.	RTG.	DESCRIPTION	MATERIAL
PIPE						
1						
2	18'-0"	2"	80		SMLS	SA-106 B
3						
4						
5						
FLANGES						
6	5	2"	80	600#	RFWN	SA-105N
7	2	2"	80	600#	HUB BLIND TAPPED 2" NPT	SA-105N
8						
9						
10						
STUDS/NUTS						
11	72	5/8"			4 1/4" LONG w/ 2 NUTS EACH	A-193-B7 A-194-2H
12						
13						
14						
15						
GASKETS						
16	9	2"	-		FLEXITALLIC	C.S.
17						
18						
19						
20						
FITTINGS/BW						
21	4	2"	80		90° LR ELBOW	SA-234-WPB
22	1	2"	80		TEE	SA-234-WPB
23						
24						
25						
26						
27						
FITTINGS/SCR-SW						
28	2	1"		3000#	T.O.L.	SA-105N
29						
30						
MISC.						
31						
32						
33						
34						
35						
REV.#	REVISION				BY	APPR
A	FOR APPROVAL				SL	01/03/05

CUSTOMER NAME  
 ENCAL - EDSON C/O CONCISE ENG.

D. PRES. 1440 PSI	D. TEMP. -20/100°F	48" X 16' SM/SM HOR. SEP. 3 PHASE 1440 PSI PIPE SPOOL			
CORR. ALLOW. 1/16"	HYDRO. PRESS. 2160 PSI				
RADIOGRAPHY 10%	P.W.H.T. NO				
W.P.S. PFI-1/2	PAINT SEE NOTE 4	DWN BY S. LO	DATE 01/03/05	APPR.	JOB# 01-024
INT. COATING NONE	INSULATION NONE	CODE B31.3	DWG. NO. 01-024-I-01	SHT# 3 of 4	REV. A

2" B.W. X 1 1/2" NPT



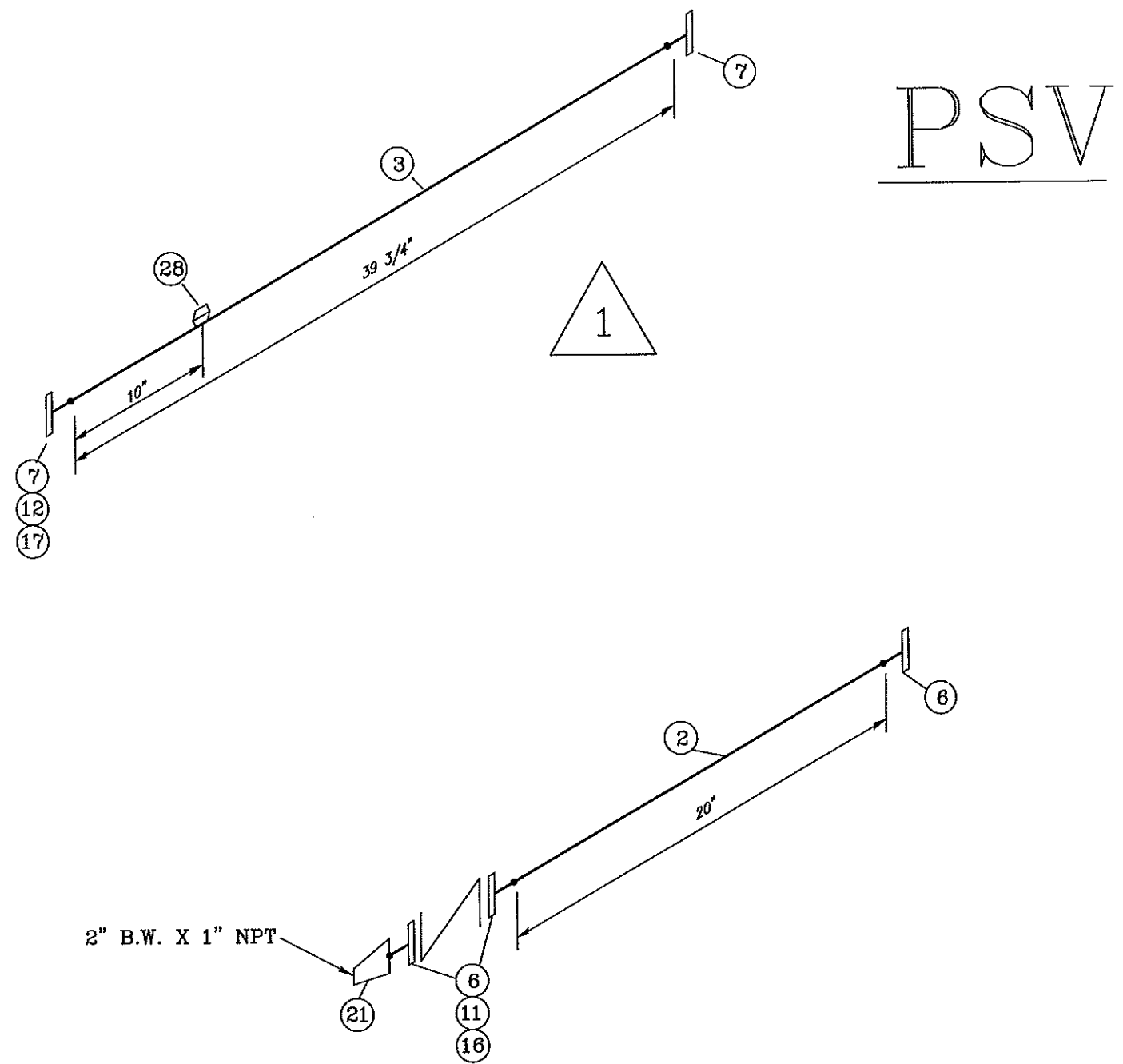
# NOTES:

- 1.) ALL DIM. IN INCHES.
- 2.) ALL BRACKETED() DIMENSIONS ARE PUP LENGTHS.
- 3.) ALL PUP LENGTHS INCLUDE 1/8" GAP EACH END.
- 4.) CLEAN PER SSPC-SP7, PRIMED AND PAINTED GREY.



## BILL OF MATERIALS

MK.	QTY.	SIZE	SCH.	RTG.	DESCRIPTION	MATERIAL	
PIPE							
1							
2	23'-0"	2"	80		SMLS	SA-106 B	
3							
4							
5							
FLANGES							
6	12	2"	80	600#	RFWN	SA-105N	
7							
8							
9							
10							
STUDS/NUTS							
11	88	5/8"			4 1/4" LONG w/ 2 NUTS EACH	A-193-BZ A-194-2H	
12							
13							
14							
15							
GASKETS							
16	11	2"	-		FLEXITALLIC	C.S.	
17							
18							
19							
20							
FITTINGS/BW							
21	5	2"	80		90° LR ELBOW	SA-234-WP	
22	2	2"	80		TEE	SA-234-WP	
23	1	2"X1 1/2"	80		CONC. REDUCER	SA-234-WP	
24	1	2"X1"	80		CONC. REDUCER	SA-234-WP	
25							
26							
27							
FITTINGS/SCR-SW							
28	1	1"		3000#	T.O.L.	SA-105N	
29							
30							
MISC.							
31							
32							
33							
34							
35							
REV.#	REVISION				BY	APPR	DATE
A	FOR APPROVAL				SL		01/03/05
CUSTOMER NAME							
ENCAL - EDSON C/O CONCISE ENG.							
D. PRES. 1440 PSI	D. TEMP. -20/100°F		48" X 16' SM/SM HOR. SEP. 3 PHASE 1440 PSI PIPE SPOOL				
CORR. ALLOW. 1/16"	HYDRO. PRESS. 2160 PSI						
RADIOGRAPHY 10%	P.W.H.T. NO						
W.P.S. PFI-1/2	PAINT SEE NOTE 4						
INT. COATING NONE	INSULATION NONE		DWN BY S. LO	DATE 01/03/05	APPR.	DATE	JOB# 01-024
			CODE B31.3	DWG. NO. 01-024-1-01			SHT# 4 of 4

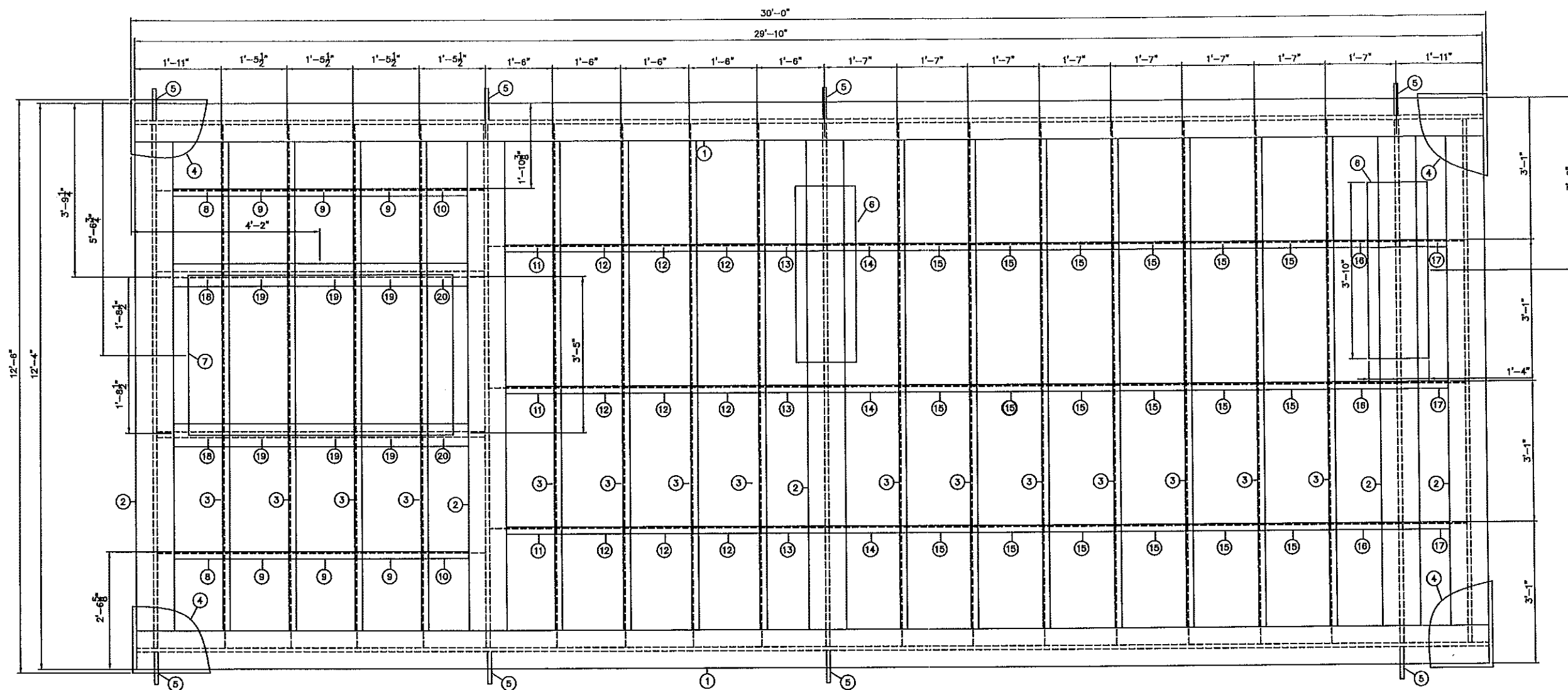


- NOTES:
- 1.) ALL DIM. IN INCHES.
  - 2.) ALL BRACKETED() DIMENSIONS ARE PUP LENGTHS.
  - 3.) ALL PUP LENGTHS INCLUDE 1/8" GAP EACH END.
  - 4.) CLEAN PER SSPC-SP7, PRIMED AND PAINTED GREY.



BILL OF MATERIALS									
MK.	QTY.	SIZE	SCH.	RTG.	DESCRIPTION			MATERIAL	
PIPE									
1									
2	2'-0"	2"	80		SMLS			SA-106 B	
3	3'-6"	3"	80		SMLS			SA-106 B	
4									
5									
FLANGES									
6	3	2"	80	150#	RFWN			SA-105N	
7	2	3"	80	150#	RFWN			SA-105N	
8									
9									
10									
STUDS/NUTS									
11	8	5/8"	3 1/4" LONG w/ 2 NUTS EACH			A-193-B7 A-194-2H			
12	4	5/8"	3 1/2" LONG w/ 2 NUTS EACH			A-193-B7 A-194-2H			
13									
14									
15									
GASKETS									
16	2	2"	-	150#	FLEXITALLIC			C.S.	
17	1	3"	-	150#	FLEXITALLIC			C.S.	
18									
19									
20									
FITTINGS/BW									
21	1	2"x1"	80		CONC. REDUCER			SA-234-WPB	
22									
23									
24									
25									
26									
27									
FITTINGS/SCR-SW									
28	1	1"		3000#	T.O.L.			SA-105N	
29									
30									
MISC.									
31									
32									
33									
34									
35									
REV.#	REVISION					BY	APPR	DATE	
1	ADDED PSV SPOOLS					SL		01/03/21	
A	FOR APPROVAL					SL		01/03/05	
CUSTOMER NAME									
ENCAL - EDSON C/O CONCISE ENG.									
D. PRES. 285 PSI		D. TEMP. -20/100°F		48" X 16' SM/SM HOR. SEP. 3 PHASE 1440 PSI PIPE SPOOL					
CORR. ALLOW. 1/16"		HYDRO. PRESS. 428 PSI							
RADIOGRAPHY 10%		P.W.H.T. NO							
W.P.S. PFI-1/2		PAINT SEE NOTE 4							
INT. COATING NONE		INSULATION NONE		OWN BY S. LO	DATE 01/03/05	APPR.	DATE	JOB# 01-024	
				CODE B31.3	DWG. NO. 01-024-I-02	SHT# 1 of 1		REV. 1	





PLANVIEW



ELEVATION

### BILL OF MATERIALS

MARK	QTY.	DESCRIPTION
1	2	W10 X 49 X 29'-10" LONG
2	5	W10 X 49 X 137 9/16" LONG
3	15	4" STD. CHANNEL x 137 9/16" LONG
4	1	CHECKER PLATE: 30'-0" X 12'-6" x 3/16" THK.
5	8	PLATE: 6 1/2" x 5" x 1" THK.
6	2	PLATE: 16" x 46" x 3/4" THK.
7	1	PLATE: 70" x 42" x 3/4" THK.
8	2	4" STD. CHANNEL x 17 3/4" LONG
9	6	4" STD. CHANNEL x 17 5/16" LONG
10	2	4" STD. CHANNEL x 17 3/16" LONG

### BILL OF MATERIALS

MARK	QTY.	DESCRIPTION
11	3	4" STD. CHANNEL x 17 13/16" LONG
12	9	4" STD. CHANNEL x 17 13/16" LONG
13	3	4" STD. CHANNEL x 17 5/8" LONG
14	3	4" STD. CHANNEL x 18 13/16" LONG
15	18	4" STD. CHANNEL x 18 13/16" LONG
16	3	4" STD. CHANNEL x 18 5/8" LONG
17	3	4" STD. CHANNEL x 17 5/8" LONG
18	2	W6 X 15 x 17 3/4" LONG
19	6	W6 X 15 x 17 5/16" LONG
20	2	W6 X 15 x 17 3/16" LONG

### NOTES:

- 1.) ALL DIM. IN INCHES.
- 2.) ALL FILLET WELDS 1/4" UNLESS NOTED OTHERWISE.



PETRO FIELD INDUSTRIES INC.

4815-43 ST. SE.  
CALGARY, ALBERTA T2B 3N4  
OFFICE: PHONE: (403) 244-3333  
FAX: (403) 245-1621  
SHOP: PHONE: (403) 207-0111  
FAX: (403) 207-3337

REV.#	REVISION	BY	APPR	DATE
A	FOR APPROVAL	SL		01/02/28
CUSTOMER NAME:		JOB#		
ENCAL - EDSON C/O CONCISE ENG.		01-024		
48"O.D. X 16' SM/SM HORIZONTAL SEPARATOR 3 PHASE 1440 PSI SKID BASE DRAWING				
DWN BY S. LO	CHK'D	APPR.	SCALE N.T.S.	DWG. NO.
DATE 01/02/28	DATE	DATE	SHT.# 1 of 1	01-024-S-01