

V-01
VERTICAL 3 PHASE SEPARATOR
30" x 8' S/S
1440 PSI MAMP
REGISTERED IN AB, SK, & BC
1/8" CORROSION ALLOWANCE
INLET DEFLECTOR, FLOAT SHIELD,
6" THICK 316SS MISTEX
X-RAY: RI-2 (PARTIAL)

V-02
6" x 36" S/S
FUEL GAS SCRUBBER
285 PSI MAMP
REGISTERED IN AB, SK, & BC

P-01
500 GALLON
DUAL WALLED
METHANOL PUMP
3/8" PLUNGER
BUINA SEALS

TK-01
500 GALLON
DUAL WALLED
METHANOL TANK
SKID MOUNTED

H-01
COI THERMAL
24X24 20,000 BTU/HR CATALYTIC
12V HEATER C/W 100% SAFETY SHUTOFF
25 CABLES

P-02

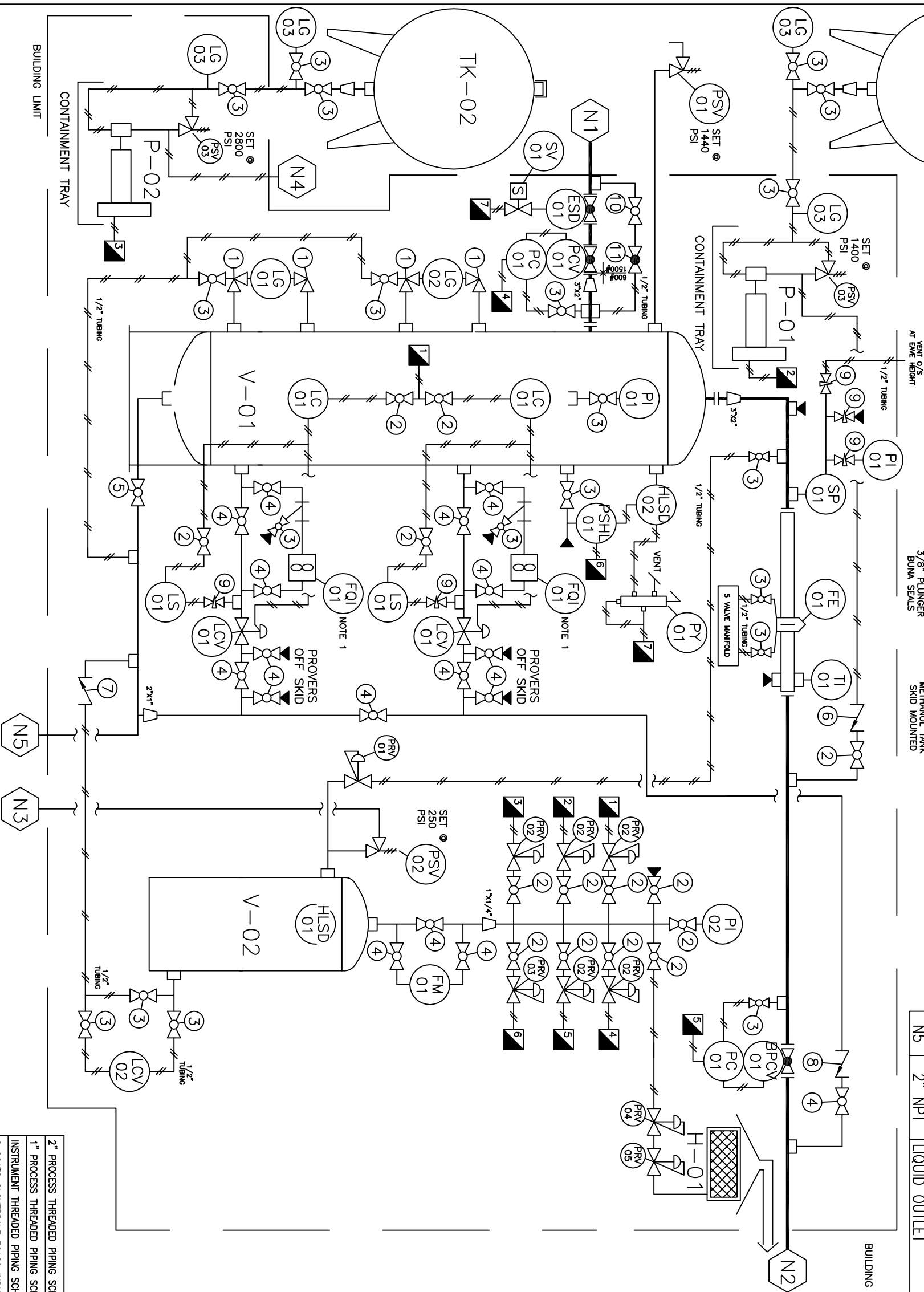
BR5100 (OR EQUIV)
METHANOL PUMP
3/8" PLUNGER
BUINA SEALS

TK-02
500 GALLON
DUAL WALLED
METHANOL TANK
SKID MOUNTED

LINE LIST			VALVE LIST			
TAG	SIZE	DESCRIPTION	MK	QTY	SIZE	RATING
N1	2"-1500#	INLET	1	4	1/2"	4000#
N2	2"-600#	GAS OUTLET	2	14	1/4"	2000#
N3	1" NPT	SCRUBBER PSV OUTLET	3	20	1/2"	2000#
N4	3/8" TUBING	METHANOL TO WELLHEAD	4	17	1"	2000#
N5	2" NPT	LIQUID OUTLET	5	1	2"	2000#

QTY	TAG #	DESCRIPTION	MATERIAL	VALVE TAG
1	FE-01	2" 600# ANSI SENIOR WETTER RUN C/W PIN FLOW CONDITIONER (2000 SPEC)	CS	PENBRTHY AN3400
1	HLSD-01	PAUNA MECHANICAL FLOAT SHUTOFF	CS	MERIDIAN BA3200
1	HLSD-02	MURPHY L1200N DVO	CS	MERIDIAN BA3200
1	SP-01	1/2" NPT WELKER SP-2 SAMPLE PROBE C/W NEEDLE VALVE	CS	PLAINSMAN CH3300
2	LC-01	DYNA FLO 5000 SNAP ACTING C/W VERTICAL DISPLACER	CS	CROWN CH3200
1	LG-01	PENBERTHY T1M6 TRANSPARENT LEVEL GAUGE	CS	CROWN CH3200
1	LG-02	PENBERTHY 1RL6 REFLEX LEVEL GAUGE	CS	GAUGETECH NV3600
4	LG-03	4" METHANOL LEVEL / RATE GAUGE	CS	FUSION BA3600
2	PI-01	0-1500 PSI D.S. L.F. B.M. 4" FACE	CS	DHV GL3150
1	PI-02	0-300 PSI D.S. L.F. B.M. 2.5" FACE		
1	PRV-01	BELGAS P627, 70-150 SPRING RANGE C/W 1/8" ORIFICE		
5	PRV-02	BELGAS P050 (0 - 35 PSI)		
1	PRV-03	BELGAS P050 (0 - 60 PSI)		
1	PRV-04	FISHER 912 REGULATOR		
1	PRV-05	MAXITROL REGULATOR		
1	PSV-01	2"x2" NPT MERCER - SET 1440 PSI		
1	PSV-02	1"x1" NPT MERCER - SET 250 PSI		
2	PSV-03	1" SWAGelok SS-4R34S-BU RELIEF VALVE - SET VARIOUS PSI		
1	TI-01	-40" TO +160" F. D.S. C/W 304 SST TW		
2	FQI-01	1" NPT NUFLU TURBINE METER C/W MCIII 14 - 20 mA TOTALIZER		
2	LCV-01	1" NPT DYNA FLO DFI C/W 1/2" TRIM		
1	LCV-02	WATSON MCDANIEL 1801 AUTO DRAIN		
1	PCV-01	2" 1500# CVS D BODY CONTROL VALVE C/W 1-1/4" TUNGSTEN CARBIDE TRIM		
1	BPCV-01	2" 600# ANSI DYNA FLO DP2000 C/W 1" TRIM & DEC2105 ACTUATOR		
2	PC-01	CVS 4150 PRESSURE CONTROLLER		
1	PY-01	AMOT 4057-GP C/W MANUAL LATCH		
1	SV-01	ASCO LOW POWER CONSUMPTION 24 VDC SOLENOID VALVE		
1	PSH-01	FISHER 4660 HI / LO PRESSURE SWITCH		
2	LS-01	METERMAN HIGH PRESSURE SWEET PROPORTIONAL LIQUID SAMPLER		
1	ESD-01	2" 1500# FP TRUNNION BY C/W 1/2 TURN 160 PSI. FAIL CLOSE ACTUATOR		
1	FM-01	ROOTS 8C-17S FUEL GAS METER		

MATERIAL LIST



BUILDING LIMIT

CONTAINMENT TRAY

1/2" TUBING

2"x1"

1/2" TUBING

PROVERS OFF SKID

PROVERS OFF SKID

PROVERS OFF SKID

PROVERS OFF SKID

PROVERS OFF SKID

PROVERS OFF SKID

PROVERS OFF SKID

PROVERS OFF SKID

PROVERS OFF SKID

PROVERS OFF SKID

PROVERS OFF SKID

PROVERS OFF SKID

PROVERS OFF SKID

PROVERS OFF SKID

PROVERS OFF SKID

PROVERS OFF SKID

PROVERS OFF SKID

PROVERS OFF SKID

PROVERS OFF SKID

PROVERS OFF SKID

PROVERS OFF SKID

PROVERS OFF SKID

PROVERS OFF SKID

PROVERS OFF SKID

PROVERS OFF SKID

PROVERS OFF SKID

PROVERS OFF SKID

PROVERS OFF SKID

PROVERS OFF SKID

PROVERS OFF SKID

PROVERS OFF SKID

PROVERS OFF SKID

PROVERS OFF SKID

LINE LIST				VALVE LIST					
TAG	SIZE	DESCRIPTION	MK	QTY	SIZE	RATING	DESCRIPTION	MATERIAL	VALVE TAG
N1	2"-1500#	INLET	1	4	1/2"	4000#	ANGLE VALVE SCREWED	CS	PENBRTHY AN3400
N2	2"-600#	GAS OUTLET	2	14	1/4"	2000#	BALL VALVE SCREWED	CS	MERIDIAN BA3200
N3	1" NPT	SCRUBBER PSV OUTLET	3	20	1/2"	2000#	BALL VALVE SCREWED	CS	MERIDIAN BA3200
N4	3/8" TUBING	METHANOL TO WELLHEAD	4	17	1"	2000#	BALL VALVE SCREWED	CS	MERIDIAN BA3200
N5	2" NPT	LIQUID OUTLET	5	1	2"	2000#	BALL VALVE SCREWED	CS	MERIDIAN BA3200

MATERIAL LIST			
QTY	TAG #	DESCRIPTION	
1	FE-01	2" 600# ANSI SENIOR METER RUN C/W PIN FLOW CONDITIONER (2000 SPEC)	
1	HLSD-01	PANAX MECHANICAL FLOAT SHUTOFF	
1	HLSD-02	MURPHY L1200N DVO	
1	SP-01	1/2" NPT WELKER SP-2 SAMPLE PROBE	
2	LC-01	C/W NEEDLE VALVE	
1	LG-01	DYNA FLO 5000 SNAP ACTING C/W VERTICAL DISPLACER	
1	LG-02	PENBERTHY 1TR6 TRANSPARENT LEVEL GAUGE	
4	LG-03	PENBERTHY 1RL6 REFLEX LEVEL GAUGE	
2	PI-01	4" METHANOL LEVEL / RATE GAUGE	
1	PI-02	0-1500 PSI D.S. L.F. B.M. 4" FACE	
1	PRV-01	0-300 PSI D.S. L.F. B.M. 2.5" FACE	
1	PRV-02	BELGAS P627, 70-150 SPRING RANGE C/W 1/8" ORIFICE	
5	PRV-03	BELGAS P050 (0 - 35 PSI)	
1	PRV-04	BELGAS P050 (0 - 60 PSI)	
1	PRV-05	FISHER 912 REGULATOR	
1	PSV-01	MAXITROL REGULATOR	
1	PSV-02	2"x2" NPT MERCER - SET 1440 PSI	
2	PSV-03	1"x1" NPT MERCER - SET 250 PSI	
1	TI-01	3" SWAGELOK SS-4R34G-BU RELIEF VALVE - SET VARIOUS PSI	
1	FQI-01	-40' TO +160' D.S. C/W 304 SST TW	
2	LCV-01	1" NPT NU FLO TURBINE METER C/W MCIII	
2	LCV-02	1" NPT DYNA FLO DFI C/W 1/2" TRIM	
1	LCV-03	1" NPT DYNA FLO DFI C/W 1/2" TRIM	
1	PCV-01	WATSON MCDANIEL 1801 AUTO DRAIN	
1	BPCV-01	2" 1500# CVS D BODY CONTROL VALVE C/W 1-1/4" TUNGSTEN CARBIDE TRIM	
2	PC-01	2" 600# ANSI DYNA FLO DP2000 C/W 1" TRIM & DEC2105 ACTUATOR	
1	PY-01	CVS 4150 PRESSURE CONTROLLER	
1	SV-01	AMOT 4057-CP C/W MANUAL LATCH	
1	PSH-01	ASCO LOW POWER CONSUMPTION 24 VDC SOLENOID VALVE	
2	LS-01	FISHER 4660 HI / LO PRESSURE SWITCH	
1	ESD-01	METERMAN HIGH PRESSURE SWEET	
1	FM-01	PROPORTIONAL LIQUID SAMPLER	
		2" 1500# FP TRUNNION BV C/W 1" TURN	
		60 PSI. FAIL. CLOSE) ACTUATOR	
		ROOTS 8C-175 FUEL GAS METER	

PIPING & INSTRUMENTATION DIAGRAM			
DATE	SCALE	REV	
SEPT 8, 2011 <td>N.T.S.<td></td><td></td></td>	N.T.S. <td></td> <td></td>		
DRAWN	SM		
CHECKED	DWG NO 8479P&ID		
BY	SH NO 1		
DATE	APPROVED		

2" PROCESS THREADED PIPING SCH 160 A106B W/ 3000PSI FITTINGS	304SS TUBING C/W SWAGELOK CADMIUM PLATED TUBE FITTINGS
1" PROCESS THREADED PIPING SCH 80 A106B W/ 3000PSI FITTINGS	600# WELDED PIPING SCH 80 A106B W/ A234WPB & A105N FITTINGS
INSTRUMENT THREADED PIPING SCH 80 A106B W/ 2000PSI FITTINGS	1500# WELDED PIPING SCH 160 A106B W/ A234WPB & A105N FITTINGS
2 COATS CLOVERPALE 70189 INDUSTRIAL ENAMEL PRIMER / FINISH	HYDROTESTED TO 1.5 TIMES WORKING PRESSURE

TK-01

VERTICAL 3 PHASE SEPARATOR
30" X 8' S/S
1440 PSI MAMP
REGISTERED IN AB, SK, & BC
1/8" CORROSION ALLOWANCE
INLET DEFLECTOR, FLOAT SHIELD,
6" THICK 316SS MIXTEX
X-RAY, RT-2 (PARTIAL)

BR5100 (OR EQUAL)
FUEL GAS SCRUBBER
250 PSI MAMP
REGISTERED IN AB, SK, & BC
3/8" PLUNGER
BUENA SEALS

500 GALLON
DUAL WALLED
METHANOL TANK
SKID MOUNTED

24X24, 20,000 BTU/HR CATALYTIC
HEATER C/W 100% SAFETY SHUTOFF
25' CABLES

V-01

6" X 36" S/S
250 PSI MAMP
REGISTERED IN AB, SK, & BC

500 GALLON
DUAL WALLED
METHANOL TANK
SKID MOUNTED

TK-02

500 GALLON
DUAL WALLED
METHANOL TANK
SKID MOUNTED

P-01

BR5100 (OR EQUAL)
METHANOL PUMP
3/8" PLUNGER
BUENA SEALS

P-02

500 GALLON
DUAL WALLED
METHANOL TANK
SKID MOUNTED

V-02

6" X 36" S/S
250 PSI MAMP
REGISTERED IN AB, SK, & BC

TK-03

500 GALLON
DUAL WALLED
METHANOL TANK
SKID MOUNTED

P-03

BR5100 (OR EQUAL)
METHANOL PUMP
3/8" PLUNGER
BUENA SEALS

V-03

6" X 36" S/S
250 PSI MAMP
REGISTERED IN AB, SK, & BC

TK-04

500 GALLON
DUAL WALLED
METHANOL TANK
SKID MOUNTED

P-04

BR5100 (OR EQUAL)
METHANOL PUMP
3/8" PLUNGER
BUENA SEALS

V-04

6" X 36" S/S
250 PSI MAMP
REGISTERED IN AB, SK, & BC

TK-05

500 GALLON
DUAL WALLED
METHANOL TANK
SKID MOUNTED

P-05

BR5100 (OR EQUAL)
METHANOL PUMP
3/8" PLUNGER
BUENA SEALS

V-05

6" X 36" S/S
250 PSI MAMP
REGISTERED IN AB, SK, & BC

TK-06

500 GALLON
DUAL WALLED
METHANOL TANK
SKID MOUNTED

P-06

BR5100 (OR EQUAL)
METHANOL PUMP
3/8" PLUNGER
BUENA SEALS

V-06

6" X 36" S/S
250 PSI MAMP
REGISTERED IN AB, SK, & BC

TK-07

500 GALLON
DUAL WALLED
METHANOL TANK
SKID MOUNTED

P-07

BR5100 (OR EQUAL)
METHANOL PUMP
3/8" PLUNGER
BUENA SEALS

V-07

6" X 36" S/S
250 PSI MAMP
REGISTERED IN AB, SK, & BC

TK-08

500 GALLON
DUAL WALLED
METHANOL TANK
SKID MOUNTED

P-08

BR5100 (OR EQUAL)
METHANOL PUMP
3/8" PLUNGER
BUENA SEALS

V-08

6" X 36" S/S
250 PSI MAMP
REGISTERED IN AB, SK, & BC

TK-09

500 GALLON
DUAL WALLED
METHANOL TANK
SKID MOUNTED

P-09

BR5100 (OR EQUAL)
METHANOL PUMP
3/8" PLUNGER
BUENA SEALS

V-09

6" X 36" S/S
250 PSI MAMP
REGISTERED IN AB, SK, & BC

TK-10

500 GALLON
DUAL WALLED
METHANOL TANK
SKID MOUNTED

P-10

BR5100 (OR EQUAL)
METHANOL PUMP
3/8" PLUNGER
BUENA SEALS

V-10

6" X 36" S/S
250 PSI MAMP
REGISTERED IN AB, SK, & BC

TK-11

500 GALLON
DUAL WALLED
METHANOL TANK
SKID MOUNTED

P-11

BR5100 (OR EQUAL)
METHANOL PUMP
3/8" PLUNGER
BUENA SEALS

V-11

6" X 36" S/S
250 PSI MAMP
REGISTERED IN AB, SK, & BC

TK-12

500 GALLON
DUAL WALLED
METHANOL TANK
SKID MOUNTED

P-12

BR5100 (OR EQUAL)
METHANOL PUMP
3/8" PLUNGER
BUENA SEALS

V-12

6" X 36" S/S
250 PSI MAMP
REGISTERED IN AB, SK, & BC

TK-13

500 GALLON
DUAL WALLED
METHANOL TANK
SKID MOUNTED

P-13

BR5100 (OR EQUAL)
METHANOL PUMP
3/8" PLUNGER
BUENA SEALS

V-13

6" X 36" S/S
250 PSI MAMP
REGISTERED IN AB, SK, & BC

TK-14

500 GALLON
DUAL WALLED
METHANOL TANK
SKID MOUNTED

P-14

BR5100 (OR EQUAL)
METHANOL PUMP
3/8" PLUNGER
BUENA SEALS

V-14

6" X 36" S/S
250 PSI MAMP
REGISTERED IN AB, SK, & BC

TK-15

500 GALLON
DUAL WALLED
METHANOL TANK
SKID MOUNTED

P-15

BR5100 (OR EQUAL)
METHANOL PUMP
3/8" PLUNGER
BUENA SEALS

V-15

6" X 36" S/S
250 PSI MAMP
REGISTERED IN AB, SK, & BC

TK-16

500 GALLON
DUAL WALLED
METHANOL TANK
SKID MOUNTED

P-16

BR5100 (OR EQUAL)
METHANOL PUMP
3/8" PLUNGER
BUENA SEALS

V-16

6" X 36" S/S
250 PSI MAMP
REGISTERED IN AB, SK, & BC

TK-17

500 GALLON
DUAL WALLED
METHANOL TANK
SKID MOUNTED

P-17

BR5100 (OR EQUAL)
METHANOL PUMP
3/8" PLUNGER
BUENA SEALS

V-17

6" X 36" S/S
250 PSI MAMP
REGISTERED IN AB, SK, & BC

TK-18

500 GALLON
DUAL WALLED
METHANOL TANK
SKID MOUNTED

P-18

BR5100 (OR EQUAL)
METHANOL PUMP
3/8" PLUNGER
BUENA SEALS

V-18

6" X 36" S/S
250 PSI MAMP
REGISTERED IN AB, SK, & BC

TK-19

500 GALLON
DUAL WALLED
METHANOL TANK
SKID MOUNTED

P-19

BR5100 (OR EQUAL)
METHANOL PUMP
3/8" PLUNGER
BUENA SEALS

V-19

6" X 36" S/S
250 PSI MAMP
REGISTERED IN AB, SK, & BC

TK-20

500 GALLON
DUAL WALLED
METHANOL TANK
SKID MOUNTED

P-20

BR5100 (OR EQUAL)
METHANOL PUMP
3/8" PLUNGER
BUENA SEALS

V-20

6" X 36" S/S
250 PSI MAMP
REGISTERED IN AB, SK, & BC

TK-21

500 GALLON
DUAL WALLED
METHANOL TANK
SKID MOUNTED

P-21

BR5100 (OR EQUAL)
METHANOL PUMP
3/8" PLUNGER
BUENA SEALS

V-21

6" X 36" S/S
250 PSI MAMP
REGISTERED IN AB, SK, & BC

TK-22

500 GALLON
DUAL WALLED
METHANOL TANK
SKID MOUNTED

P-22

BR5100 (OR EQUAL)
METHANOL PUMP
3/8" PLUNGER
BUENA SEALS

V-22

6" X 36" S/S
250 PSI MAMP
REGISTERED IN AB, SK, & BC

TK-23

500 GALLON
DUAL WALLED
METHANOL TANK
SKID MOUNTED

P-23

BR5100 (OR EQUAL)
METHANOL PUMP
3/8" PLUNGER
BUENA SEALS

V-23

6" X 36" S/S
250 PSI MAMP
REGISTERED IN AB, SK, & BC

TK-24

500 GALLON
DUAL WALLED
METHANOL TANK
SKID MOUNTED

P-24

BR5100 (OR EQUAL)
METHANOL PUMP
3/8" PLUNGER
BUENA SEALS

V-24

6" X 36" S/S
250 PSI MAMP
REGISTERED IN AB, SK, & BC

TK-25

500 GALLON
DUAL WALLED
METHANOL TANK
SKID MOUNTED

P-25

BR5100 (OR EQUAL)
METHANOL PUMP
3/8" PLUNGER
BUENA SEALS

V-25

6" X 36" S/S
250 PSI MAMP
REGISTERED IN AB, SK, & BC

TK-26

500 GALLON
DUAL WALLED
METHANOL TANK
SKID MOUNTED

P-26

BR5100 (OR EQUAL)
METHANOL PUMP
3/8" PLUNGER
BUENA SEALS

V-26

6" X 36" S/S
250 PSI MAMP
REGISTERED IN AB, SK, & BC

TK-27

500 GALLON
DUAL WALLED
METHANOL TANK
SKID MOUNTED

P-27

BR5100 (OR EQUAL)
METHANOL PUMP
3/8" PLUNGER
BUENA SEALS

V-27

6" X 36" S/S
250 PSI MAMP
REGISTERED IN AB, SK, & BC

TK-28

500 GALLON
DUAL WALLED
METHANOL TANK
SKID MOUNTED

P-28

BR5100 (OR EQUAL)
METHANOL PUMP
3/8" PLUNGER
BUENA SEALS

V-28

6" X 36" S/S
250 PSI MAMP
REGISTERED IN AB, SK, & BC

TK-29

500 GALLON
DUAL WALLED
METHANOL TANK
SKID MOUNTED

P-29

BR5100 (OR EQUAL)
METHANOL PUMP
3/8" PLUNGER
BUENA SEALS

V-29

6" X 36" S/S
250 PSI MAMP
REGISTERED IN AB, SK, & BC

TK-30

500 GALLON
DUAL WALLED
METHANOL TANK
SKID MOUNTED

P-30

BR5100 (OR EQUAL)
METHANOL PUMP
3/8" PLUNGER
BUENA SEALS

V-30

6" X 36" S/S
250 PSI MAMP
REGISTERED IN AB, SK, & BC

TK-31

500 GALLON
DUAL WALLED
METHANOL TANK
SKID MOUNTED

P-31

BR5100 (OR EQUAL)
METHANOL PUMP
3/8" PLUNGER
BUENA SEALS

V-31

6" X 36" S/S
250 PSI MAMP
REGISTERED IN AB, SK, & BC

TK-32

500 GALLON
DUAL WALLED
METHANOL TANK
SKID MOUNTED

P-32

BR5100 (OR EQUAL)
METHANOL PUMP
3/8" PLUNGER
BUENA SEALS

V-32

6" X 36" S/S
250 PSI MAMP
REGISTERED IN AB, SK, & BC

TK-33

500 GALLON
DUAL WALLED
METHANOL TANK
SKID MOUNTED

P-33

BR5100 (OR EQUAL)
METHANOL PUMP
3/8" PLUNGER
BUENA SEALS

V-33

6" X 36" S/S
250 PSI MAMP
REGISTERED IN AB, SK, & BC

TK-34

500 GALLON
DUAL WALLED
METHANOL TANK
SKID MOUNTED

P-34

BR5100 (OR EQUAL)
METHANOL PUMP
3/8" PLUNGER
BUENA SEALS

V-34

6" X 36" S/S
250 PSI MAMP
REGISTERED IN AB, SK, & BC

TK-35

500 GALLON
DUAL WALLED
METHANOL TANK
SKID MOUNTED

P-35

BR5100 (OR EQUAL)
METHANOL PUMP
3/8" PLUNGER
BUENA SEALS

V-35

6" X 36" S/S
250 PSI MAMP
REGISTERED IN AB, SK, & BC

TK-36

500 GALLON
DUAL WALLED
METHANOL TANK
SKID MOUNTED

P-36

BR5100 (OR EQUAL)
METHANOL PUMP
3/8" PLUNGER
BUENA SEALS

V-36

6" X 36" S/S
250 PSI MAMP
REGISTERED IN AB, SK, & BC

TK-37

500 GALLON
DUAL WALLED
METHANOL TANK
SKID MOUNTED

P-37

BR5100 (OR EQUAL)
METHANOL PUMP
3/8" PLUNGER
BUENA SEALS

V-37

6" X 36" S/S
250 PSI MAMP
REGISTERED IN AB, SK, & BC

TK-38

500 GALLON
DUAL WALLED
METHANOL TANK
SKID MOUNTED

P-38

BR5100 (OR EQUAL)
METHANOL PUMP
3/8" PLUNGER
BUENA SEALS

V-38

6" X 36" S/S
250 PSI MAMP
REGISTERED IN AB, SK, & BC

TK-39

500 GALLON
DUAL WALLED
METHANOL TANK
SKID MOUNTED

P-39

BR5100 (OR EQUAL)
METHANOL PUMP
3/8" PLUNGER
BUENA SEALS

V-39

6" X 36" S/S
250 PSI MAMP
REGISTERED IN AB, SK, & BC

TK-40

500 GALLON
DUAL WALLED
METHANOL TANK
SKID MOUNTED

P-40

BR5100 (OR EQUAL)
METHANOL PUMP
3/8" PLUNGER
BUENA SEALS

V-40

6" X 36" S/S
250 PSI MAMP
REGISTERED IN AB, SK, & BC

TK-41

500 GALLON
DUAL WALLED
METHANOL TANK
SKID MOUNTED

P-41

BR5100 (OR EQUAL)
METHANOL PUMP
3/8" PLUNGER
BUENA SEALS

V-41

6" X 36" S/S
250 PSI MAMP
REGISTERED IN AB, SK, & BC

TK-42

500 GALLON
DUAL WALLED
METHANOL TANK
SKID MOUNTED

P-42

BR5100 (OR EQUAL)
METHANOL PUMP
3/8" PLUNGER
BUENA SEALS

V-42

6" X 36" S/S
250 PSI MAMP
REGISTERED IN AB, SK, & BC

TK-43

500 GALLON
DUAL WALLED
METHANOL TANK
SKID MOUNTED

P-43

BR5100 (OR EQUAL)
METHANOL PUMP
3/8" PLUNGER
BUENA SEALS

V-43

6" X 36" S/S
250 PSI MAMP
REGISTERED IN AB, SK, & BC

TK-44

500 GALLON
DUAL WALLED
METHANOL TANK
SKID MOUNTED

P-44

BR5100 (OR EQUAL)
METHANOL PUMP
3/8" PLUNGER
BUENA SEALS

V-44

6" X 36" S/S
250 PSI MAMP
REGISTERED IN AB, SK, & BC

TK-45

500 GALLON
DUAL WALLED
METHANOL TANK
SKID MOUNTED

P-45

BR5100 (OR EQUAL)
METHANOL PUMP
3/8" PLUNGER
BUENA SEALS

V-45

6" X 36" S/S
250 PSI MAMP
REGISTERED IN AB, SK, & BC

TK-46

500 GALLON
DUAL WALLED
METHANOL TANK
SKID MOUNTED

P-46

BR5100 (OR EQUAL)
METHANOL PUMP
3/8" PLUNGER
BUENA SEALS

V-46

6" X 36" S/S
250 PSI MAMP
REGISTERED IN AB, SK, & BC

TK-47

500 GALLON
DUAL WALLED
METHANOL TANK
SKID MOUNTED

P-47

BR5100 (OR EQUAL)
METHANOL PUMP
3/8" PLUNGER
BUENA SEALS

V-47

6" X 36" S/S
250 PSI MAMP
REGISTERED IN AB, SK, & BC

TK-48

500 GALLON
DUAL WALLED
METHANOL TANK
SKID MOUNTED

P-48

BR5100 (OR EQUAL)
METHANOL PUMP
3/8" PLUNGER
BUENA SEALS

V-48

6" X 36" S/S
250 PSI MAMP
REGISTERED IN AB, SK, & BC

TK-49

500 GALLON
DUAL WALLED
METHANOL TANK
SKID MOUNTED

P-49

BR5100 (OR EQUAL)
METHANOL PUMP
3/8" PLUNGER
BUENA SEALS

V-49

6" X 36" S/S
250 PSI MAMP
REGISTERED IN AB, SK, & BC

TK-50

500 GALLON
DUAL WALLED
METHANOL TANK
SKID MOUNTED

P-50

BR5100 (OR EQUAL)
METHANOL PUMP
3/8" PLUNGER
BUENA SEALS

V-50

6" X 36" S/S
250 PSI MAMP
REGISTERED IN AB, SK, & BC

TK-51

500 GALLON
DUAL WALLED
METHANOL TANK
SKID MOUNTED

P-51

BR5100 (OR EQUAL)
METHANOL PUMP
3/8" PLUNGER
BUENA SEALS

V-51

6" X 36" S/S
250 PSI MAMP
REGISTERED IN AB, SK, & BC

TK-52

500 GALLON
DUAL WALLED
METHANOL TANK
SKID MOUNTED

P-52

BR5100 (OR EQUAL)
METHANOL PUMP
3/8" PLUNGER
BUENA SEALS

V-52

6" X 36" S/S
250 PSI MAMP
REGISTERED IN AB, SK, & BC

TK-53

500 GALLON
DUAL WALLED
METHANOL TANK
SKID MOUNTED

P-53

BR5100 (OR EQUAL)
METHANOL PUMP
3/8" PLUNGER
BUENA SEALS

V-53

6" X 36" S/S
250 PSI MAMP
REGISTERED IN AB, SK, & BC

TK-54

500 GALLON
DUAL WALLED
METHANOL TANK
SKID MOUNTED

P-54

BR5100 (OR EQUAL)
METHANOL PUMP
3/8" PLUNGER
BUENA SEALS

V-54

6" X 36" S/S
250 PSI MAMP
REGISTERED IN AB, SK, & BC

TK-55

500 GALLON
DUAL WALLED
METHANOL TANK
SKID MOUNTED

P-55

BR5100 (OR EQUAL)
METHANOL PUMP
3/8" PLUNGER
BUENA SEALS

V-55

6" X 36" S/S
250 PSI MAMP
REGISTERED IN AB, SK, & BC

TK-56

500 GALLON
DUAL WALLED
METHANOL TANK
SKID MOUNTED

P-56

BR5100 (OR EQUAL)
METHANOL PUMP
3/8" PLUNGER
BUENA SEALS

V-56

6" X 36" S/S
250 PSI MAMP
REGISTERED IN AB, SK, & BC

TK-57

500 GALLON
DUAL WALLED
METHANOL TANK
SKID MOUNTED

P-57

BR5100 (OR EQUAL)
METHANOL PUMP
3/8" PLUNGER
BUENA SEALS

V-57

6" X 36" S/S
250 PSI MAMP
REGISTERED IN AB, SK, & BC

TK-58

500 GALLON
DUAL WALLED
METHANOL TANK
SKID MOUNTED

P-58

BR5100 (OR EQUAL)
METHANOL PUMP
3/8" PLUNGER
BUENA SEALS

V-58

6" X 36" S/S
250 PSI MAMP
REGISTERED IN AB, SK, & BC

TK-59

500 GALLON
DUAL WALLED
METHANOL TANK
SKID MOUNTED

P-59

BR5100 (OR EQUAL)
METHANOL PUMP
3/8" PLUNGER
BUENA SEALS

V-59

6" X 36" S/S
250 PSI MAMP
REGISTERED IN AB, SK, & BC

TK-60

500 GALLON
DUAL WALLED
METHANOL TANK
SKID MOUNTED

P-60

BR5100 (OR EQUAL)
METHANOL PUMP
3/8" PLUNGER
BUENA SEALS

V-60

6" X 36" S/S
250 PSI MAMP
REGISTERED IN AB, SK, & BC

TK-61

500 GALLON
DUAL WALLED
METHANOL TANK
SKID MOUNTED

P-61

BR5100 (OR EQUAL)
METHANOL PUMP
3/8" PLUNGER
BUENA SEALS

V-61

6" X 36" S/S
250 PSI MAMP
REGISTERED IN AB, SK, & BC

TK-62

500 GALLON
DUAL WALLED
METHANOL TANK
SKID MOUNTED

P-62

BR5100 (OR EQUAL)
METHANOL PUMP
3/8" PLUNGER
BUENA SEALS

V-62

6" X 36" S/S
250 PSI MAMP
REGISTERED IN AB, SK, & BC

TK-63

500 GALLON
DUAL WALLED
METHANOL TANK
SKID MOUNTED

P-63

BR5100 (OR EQUAL)
METHANOL PUMP
3/8" PLUNGER
BUENA SEALS

V-63

6" X 36" S/S
250 PSI MAMP
REGISTERED IN AB, SK, & BC

TK-64

500 GALLON
DUAL WALLED
METHANOL TANK
SKID MOUNTED

P-64

BR5100 (OR EQUAL)
METHANOL PUMP
3/8" PLUNGER
BUENA SEALS

V-64

6" X 36" S/S
250 PSI MAMP
REGISTERED IN AB, SK, & BC

TK-65

500 GALLON
DUAL WALLED
METHANOL TANK
SKID MOUNTED

P-65

BR5100 (OR EQUAL)
METHANOL PUMP
3/8" PLUNGER
BUENA SEALS

V-65

6" X 36" S/S
250 PSI MAMP
REGISTERED IN AB, SK, & BC

TK-66

500 GALLON
DUAL WALLED
METHANOL TANK
SKID MOUNTED

P-66

BR5100 (OR EQUAL)
METHANOL PUMP
3/8" PLUNGER
BUENA SEALS

V-66

6" X 36" S/S
250 PSI MAMP
REGISTERED IN AB, SK, & BC

TK-67

500 GALLON
DUAL WALLED
METHANOL TANK
SKID MOUNTED

P-67

BR5100 (OR EQUAL)
METHANOL PUMP
3/8" PLUNGER
BUENA SEALS

V-67

6" X 36" S/S
250 PSI MAMP
REGISTERED IN AB, SK, & BC

TK-68

500 GALLON
DUAL WALLED
METHANOL TANK
SKID MOUNTED

P-68

BR5100 (OR EQUAL)
METHANOL PUMP
3/8" PLUNGER
BUENA